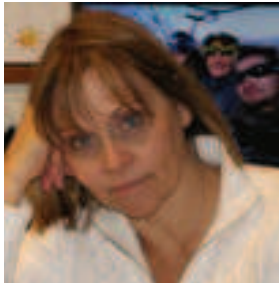


Online Faculty Update

From the Center for Instructional Technology

September 2011
Newsletter

FALL 2011 SEMESTER START INFORMATION



I would like to welcome you back to campus!

This September we will be hosting **Clicker Webinars with Turning Technologies** on Wednesdays.

Coming in October, meeting of a new **iPad/Tablet User Group** as well as our **PLATO User Group**.

Please feel free to contact me if you have any questions or would like to learn more about CIT's services and training for faculty teaching online. Have a great semester!

~ Lynn Zayac, Director
lzayac@westfield.ma.edu



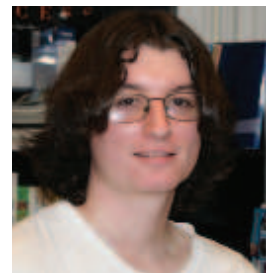
Students will have access to courses on Plato by 9am, Sept. 7th

Welcome back to campus!

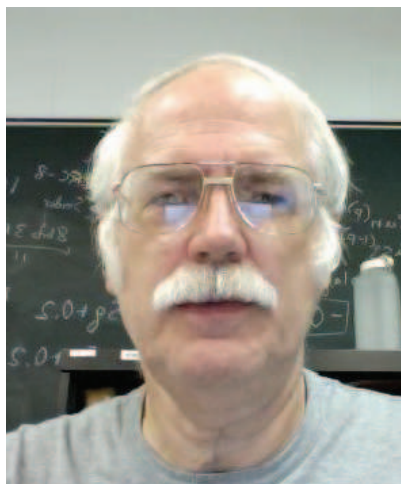
In order to load students into Plato courses on the first day of classes, all courses must be created before the deadline. Requesting courses after the start of classes creates problems because students must be loaded into courses manually. If you have questions regarding this deadline contact Joe at 413-572-5664. To get to the course request form go to westfield.ma.edu/plato, click on the **Online News and Resources** link on the right side bar, and then click on **Faculty News and Resources, Request your Plato Courses Here**. You will find the form and tutorials on how to use it.

Don't forget to "flip your switch" in **MyWestfield** to open your classes !

~ Joe Axenroth, Interim Plato Administrator
jaxenroth@westfield.ma.edu

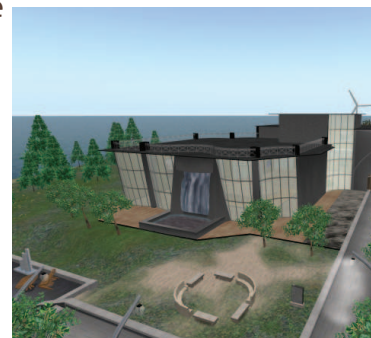


Second Life Training Update, Lynn Zayac, Director CIT



The WSU Island in Second Life is up and running and inhabited by several WSU faculty members. WSU has an official island in Second Life containing a conference center with media screens to host events or classes up to 100 avatars at one time. Professor Larry Griffith will use Second Life again this semester in his Computer Security class.

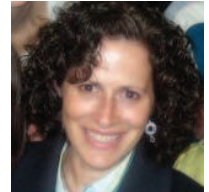
Please contact Joe Axenroth at ext. 5664 for details and training on how you can use the WSU island in Second Life.



Schedule a course tune-up with Lisa Clark

Schedule time with Lisa to learn how to make easy changes to your online course, or your face to face enhanced course to make it easier for your students to navigate and learn the materials in Plato. Learn easy ways to streamline communications, and make it clear what you want your students to be doing. Discuss a powerpoint, or show how to do a problem in excel with easy screen capture software from TechSmith. Learn how to set up a virtual office (Vroom, by Elluminate) to meet with students in real time, online from just about anywhere. Whether you want to add an image to your course, or meet with your students online, Lisa can get you up to speed in no time.

For more information contact:
Lisa Clark, Online Faculty Support Specialist
413-572-8249 lclark@westfield.ma.edu
www.westfield.ma.edu/plato



Clicker Update from Joe Axenroth



You use TurningPoint. Students are engaged and responsive; polling portrays students' misconceptions, which you handle gracefully. In perfect sequence, you respond back to your students' responses. Yet the sequence of responses here is entirely linear with respect to your presentation. Slide by slide, each presentation session is the same. What to do? Enter TurningPoint's conditional branching! Using responses by your students, your presentation branches out through much more customizable paths. Focus is then led down the path of slides for which content is based on the concepts needing more communication.



If you would like to find out more information about TurningPoint clickers and their uses in the classroom, please contact Joe Axenroth at x5664. You can also view the 'TurningPoint @ CIT' blog at tpcit.blogspot.com for more ideas. ~ Joe

Smarthinking - Free Online Tutoring

SMARTHINKING is a FREE online tutoring for a variety of subjects available to students attending Westfield (WSU). SMARTHINKING's fundamental objectives are to engage and encourage students in active learning, as well as to enhance their motivation. Our tutors strive to help students develop successful learning skills, rather than simply "giving answers" or "doing homework" for them. In a professional and supportive environment, we focus on the power of human interaction and the use of technology to assist a student-centered tutoring process. Go to westfield.ma.edu/plato to find the login button. Students use their WSU email address to create their account. Please contact Valerie for login issues, vdepina@westfield.ma.edu or ext. 8130.

Web 2.0 Trainings



Schedule a one on one or department training to learn more about the wonderful world of Web 2.0. Learn how to use great applications, such as Facebook, Twitter, Diigo, Google Apps, RSS Feeds and many more exciting new tools. Please contact Lisa at lclark@westfield.ma.edu for more information.

Important Web Links

Onsite Student Support: vdepina@wsc.ma.edu
24/7 Plato Support: platohelp.westfield.ma.edu/
Online Tutoring: cit.westfield.ma.edu/smarthinking/
Faculty Plato Support: lclark@westfield.ma.edu
Faculty After Hours Plato Support: cit.westfield.ma.edu/helpdesk
Faculty Resources: westfield.ma.edu/plato, look under Online Learning Resources on the right side of the page