

FALL 2024

Transfer Next Steps



GET CONNECTED

- Activate your student email account and [MyWestfield student portal](#).
- [Link your WSU email account to your phone](#) and start checking your WSU email regularly.
- Sign up for the [Emergency Notification System](#) through MyWestfield.
- [Complete your WSU360 profile](#) and explore your success network.
- Download the apps below to stay connected with WSU on the go:
[Westfield app](#)
[PLATO app](#)
[GET app](#)



For login/ activation assistance please [click here](#) for instructions or contact supportdesk@westfield.ma.edu

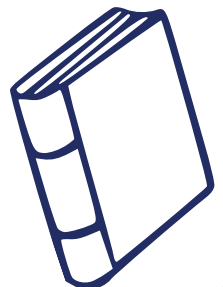
ACADEMICS & CLASSES

- Check your degree audit to make sure that everything transferred correctly, including AP credits and CLEP scores.
AP & CLEP scores can be sent directly to the [Registrar's Office](#).
- Review your course schedule.
Reach out to the Transfer Advisor, Brittany Garand, with any questions or concerns at bgarand@westfield.ma.edu.
- Submit your final official transcripts to the [Admissions Office](#) as soon as your semester grades are posted.

If you do not submit your final transcripts, a registration hold may be placed on your account to prevent you from registering for classes next semester!

- Find and purchase your textbooks [here](#).

Please note: we recommend that you wait until late August, when schedules are finalized, before purchasing any class materials.



FINANCIAL AID & BILLING

- Complete [Entrance Counseling & Loan Agreement](#) for a Subsidized/ Unsubsidized (MPN) Master Promissory Note (ONLY for Federal Student Loan Borrowers).

The federal student loan will not credit the semester bill until both items are complete.



- Look over and pay your student bill.

This will be available online (not mailed). Please contact [Student Accounts](#) if you have any questions or concerns about your bill. Unpaid bills will result in holds on your account.

- Make sure your financial aid is all set (if applicable).

All financial aid package, scholarship and grants, or financial eligibility questions can be directed to financialaid@westfield.ma.edu. If you have excess financial aid, it can be [transferred to Owl Bucks](#) to be used toward books or campus dining.

REQUIRED FORMS

- Complete the [Health Insurance Waiver or Enrollment Form](#).

You can review our insurance brochure, enroll in our plan or waive our health insurance. You MUST either enroll in our plan or waive it.

- Complete the [Health/Physical and Immunization Form](#).

This form is required: Massachusetts law requires that all college students have certain immunizations before coming to school.



- Complete the [Proof of Residency Form](#).

The Proof of Residency Form is sent to you after submitting the required Enrollment Deposit. The Proof of Residency Form is required of all new students to Westfield State University. Failure to complete this form may result in a registration hold on your account.



- Complete the required Title IX and Alcohol EDU Trainings.

They will be sent to your WSU email address before the semester starts and are federally required. These trainings must be completed each academic year. Failure to complete the trainings will result in a \$100 fine and a hold on your account.

CAMPUS LIFE & SERVICES

- Purchase your [parking permit](#).

If you will have a vehicle on campus, make sure you purchase your parking decal for the semester. All parking decals are virtual and will be linked to your vehicle's license plate number. If you have excess financial aid, it can be applied toward your parking decal by emailing parking@westfield.ma.edu.

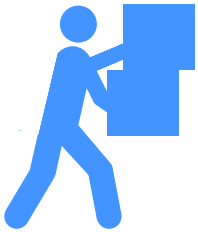


- Upload your photo for your [Student ID card](#).



If you are a resident living on campus, you will receive the card when you move in. If you are a commuter, you will pick up your ID card at the Campus Card Office in Wilson Hall when classes begin. ID cards will not be mailed.

- Living on campus? Complete your Housing Agreement, create your roommate profile, and get ready to meet your roommate all online!



New student move-in is the weekend before classes begin. For housing questions, please contact Residential Life at (413) 572-5402 or housing@westfield.ma.edu.

- Attend new student orientation.

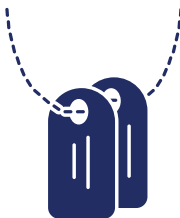
Attend the required in-person [Transfer Student Orientation](#), which takes place [the weekend before classes start](#). For more information, contact nso@westfield.ma.edu.

- Complete the Disabilities Notification Form (if applicable)



Complete the [Disabilities Notification Form](#) to find out about support services and reasonable accommodations for students with disabilities. For more information, email [Disability Services](#) at ds@westfield.ma.edu.

- If you are a veteran or are military-connected, contact the [Veteran and Military Services office](#).



- If you were previously part of a TRIO Student Support Services Program at another institution, [apply to join TRIO](#) at Westfield State.

- If you were previously part of the Honors Program at another institution, apply to join the [Westfield State University Honors Program](#).

