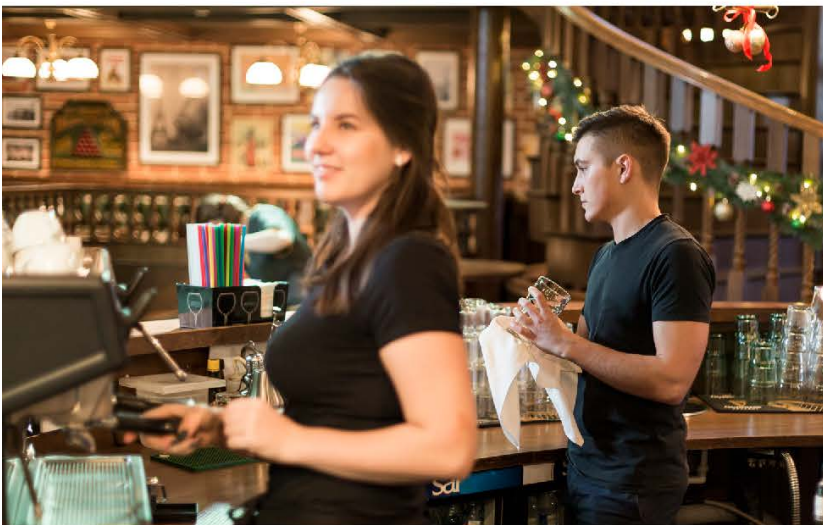


CAREER CENTER

PART-TIME JOBS NEWSLETTER

Week of July 15, 2019



Career Center

Lammers Annex, 577 Western Avenue, Westfield, MA 01086
(413) 572-5206, careers@westfield.ma.edu

Westfield
STATE UNIVERSITY

westfield.ma.edu/CareerCenter

Current Part-Time Job Listings

Student Jobs at Westfield State University: Many positions available for Trust Fund (State) or Work Study (FAFSA) student jobs **On Campus**; Please go to: www.westfield.ma.edu, click "MyWestfield" to log in, click "Campus Life", click "Student Employment"; **OR:** www.westfield.ma.edu and scroll down to click on "Careers at Westfield State" for **SUMMER JOBS!!**

Jobs & Internships (FT or PT): Simply go to www.westfield.ma.edu/careercenter; Click "Handshake for Students & Alumni"; Register; Begin search for paid jobs & internships in your desired locations.

Retail, Loss Prevention, Public Safety Officers, Etc.: Apply in person at **Holyoke Mall, Eastfield Mall, MA, Lee Premium Outlets, MA - or Enfield Mall, CT**; Seasonal work available; Job postings located at: <https://www.holyokemall.com/jobs/>

Museum Visitor Experience Hosts: Amelia Park Children's Museum, 29 S. Broad St., Westfield, MA; Various Shifts avail.; Assist Visitors/Children, art & science programs, care for live animals, customer service, etc.; Email Resume to: apcm.ray@gmail.com or drop off in person (Thurs.-Mon.). **07/15**

Summer Security, Custodian, Lifeguards, Camp Coor., Park Cashiers, Laborers, Etc.: City of Easthampton, Personnel Dept., 50 Payson Ave., Easthampton, MA 01027-2266; Apply in person or online at: <https://easthamptonma.gov/employment.html>

Big E Jobs (Sept. 13-29): Various jobs; Flex. shifts; <https://www.thebige.com/p/generalinfo/employment> Eastern States Expo., 1305 Memorial Ave., West Springfield, MA; Will train; Fill out application at <http://tinyurl.com/BigEemployment> include Resume; Questions to employment@TheBigE.com **07/15**

Fall Softball Supervisor, Field Hockey or Tennis Instructor: Westfield Parks & Recreation; Application at www.cityofwestfield.org "Personnel Dept."; Bring to 59 Court St., Westfield, MA (8AM-4PM); Must submit CORI/SORI & sports knowledge; Quest. call 413-572-6263; **Deadline to apply is August 9. 07/15**

Dockworker: A. Duie Pyle, Westfield, MA; Load/unload trailers, use elec. pallet jack, forklift; Flex. Sch.; Will train; Apply online and/or in person at: https://re31.ultipro.com/ADU1001/JobBoard/JobDetails.aspx?ID=*B9A0E3A47BE8D29D

Counter Help or Steamer or Driver: Will train; Flexible schedules; Apply in person at Stanley Cleaners, 89 Main St., Westfield, MA. **07/15**

Warehouse Team Member: Order fulfillment; Training provided; Flexible schedule; Amazon Fulfillment Ctr., 200 Old Iron Ore Road, Windsor, CT; Apply online at:

<https://www.amazon.jobs/en/jobs/SF190020490/warehouse-team-member-part-time-full-time-flexible-hours>

Wait Staff: Red Rose Pizza, 1060 Main St., Springfield, MA; Must have experience & tip certified; Apply in person (T-F, 11AM-4PM), ask for Rita or Ben. **07/15**

Fitness Specialist: Work nights & weekends; Boys & Girls Club, Ludlow, MA; 20 hrs./wk.; \$13/hr.; CPR & First Aid Certs.; Some experience preferred; Send Resume & CL to Mark Hardy (Fitness Dir.): mhardy@ludlowbgc.org

Summer DPW Landscaper, etc. (ASAP): Town of Southwick, 454 College Hwy., Southwick, MA; Work up to 40 hrs./wk., 7AM-3:30PM; General landscaping, assist w/ road repairs, painting hydrants, etc.; \$12/hr.; Driver's License required; Apply in person. **07/15**

Servers & Bartenders: SOK's Runway Restaurant, 110 Airport Rd., Westfield, MA; Will train Servers; Various shifts available; Email Resume to Mgr. James Lindley: soksrunway@gmail.com or apply online at: <https://www.indeed.com/jobs?q=sok%27s%20runway&&vjk=0d9d6110524d7529&apply=1> **07/15**

Summer Library Page: Southwick Public Library, 95 Feeding Hills Rd., Southwick, MA; 18 hrs./wk., T-F, 12PM-3:45PM; June 17-Aug. 9; \$12/hr.; Apply in person.

Photographer/Marketing/Website Edits (Seasonal): Lamson Products, 79 Mainline Dr., Westfield, MA; Website & Social Media photo changes, edits, videos (some training provided); \$20/hr.; For more info. & to send resume to Jay Snow: jsnow@lamsonproducts.com

Driveway Coating/Sealing (Summer): Will train; Work full-time, Mon.-Fri., \$16/hr.; Must have car; Call Office Manager at 800-272-2561 with your info. & set up interview; The Crack Man, 14 Clifton St., Westfield, MA.

Sales/Retail MotorClothes/Finance/Techs./Etc.: Will train the right candidates; Harley-Davidson, 17 College Hwy., Southampton, MA; Apply in person. **07/15**

Summer Camp Jobs (OR Paid Sports Interns): Camp Winadu in Pittsfield, MA; Room & Board included; Work Mid-June to Mid-Aug.; Sports Interns apply at: <https://campwinadu.wufoo.com/forms/zqgyv2v03bj07a/> and jobs at: <https://www.campwinadu.com/jobs/> Questions contact Mike Gerling, Assistant Director at 914-437-7200 or email mike@campwinadu.com **07/15**

Summer Camp Sports Coaching Jobs (or Interns): Good pay, housing, meals, laundry service; Basketball, Tennis, Golf, Lacrosse, Baseball; Work Jun. 19-Aug. 15; Camp Starlight in Starlight, PA; Great for **Athletic/Educ. Majors**; Apply online at www.campstarlight.com; More info., call Roy Kaplan: 570-798-2525 or 561-296-1001.

Wait Staff: Experience pref.; 50's Diner, 363 Burnett Rd., Chicopee, MA; For more information, call (M-F, between 8AM-5PM) at 413-594-5436. **07/08**

Landscaper (Summer): Flexible schedule; \$15/hr.; Basic landscaper skills; Apply in person at St. Anne Country Club, 781 Shoemaker Lane, Feeding Hills, MA.

Packaging (Summer): Packing boxes; Will train; Up to 40 hrs./wk.; \$12.45/hr.; Work 6AM-2PM; Application online at www.sullivanpaper.com then del. To meghan@sullivanpaper.com or 42 Progress Ave., East Longmeadow, MA; Questions Meghan O'Brien Sullivan, Director of HR: 413-734-3107 or email above. **07/08**

Summer Park Interpreters/Tour Guides: Can work June – October; \$15.78/hr.; Natural & Cultural history knowledge a plus; Need MA Driver's License; Various MA state park locations; Work with public; Apply online: <https://massanf.taleo.net/careersection/ex/jobsearch.ftl#> & select O.C.R. West Region; More information, contact Alec Gillman 413-442-8928 ext. 134. **07/08**

Tree Planting Laborer (Summer, FT): In Westfield & Chicopee, MA; Questions contact Rachel DeMatte at rachel.dematte@state.ma.us ; Apply **ASAP** online at: <https://massanf.taleo.net/careersection/ex/jobdetail.ftl?job=190002K5> **07/08**

Summer Camp Counselors, Groundskeepers, Directors, Etc.: Camp locations in Springfield, West Springfield, Wilbraham, MA; For more info. & to apply go to: <https://usr55.dayforcehcm.com/CandidatePortal/en-US/springfieldy> **07/08**

Bank Tellers (2): TD Bank, 60 Main St., Westfield, MA; Pref. Russian/Ukrainian speakers; Some exp. pref. but will train; Apply online at: www.TDBank.com/careers

Wait Staff or Bartender: Tavern on the Hill, 100 Mountain Road, Easthampton, MA; Weekends a must; Apply in person (Resume) on Mon-Thurs, 3-4:30PM.

Horse Riders: Must ride English & Western; Driving a truck is a plus; Strain Family Horse Farm, 30 Sakrison Rd., Granby, CT 06035; Full days preferred for Summer or Part-Time for Fall; Call 860-653-3275. **07/08**

Graphic Design Intern (Paid-All Semesters): Brigade, 195 Russell St., Hadley, MA; Work 2 days/wk., 9AM-5PM; For more information and to apply online, go to: <https://wearebrigade.com/career/graphic-design-intern/>

Servers or Bartender: Exp. pref.; Apply in person (with resume) to Russell Inn Restaurant, 65 Westfield Road, Russell, MA OR call 413-862-3608. **07/08**

Accounting, Auditing, Security, Food Service, Retail, Games, Rides, Water Park, Entertainment, Landscaping, Etc.: Six Flags New England, 1623 Main St., Agawam, MA; Apply online or in person, look at website: <https://www.sixflagsjobs.com/> or

www.sixflags.com/sfnecasting or call 413-821-2620 or 413-786-9300 for more info.; Training provided; **ASAP!**

Wait Staff: Exp. pref. but will train; East Mountain Country Club, 1458 E. Mountain Rd., Westfield, MA; More info. call Brenda Coggin at 413-374-3434. **07/08**

Servers & Bartenders & Security & Cooks: Must be enthusiastic; Exp. pref. but will train; Samuel's (Basketball Hall of Fame) 1000 W. Columbus Ave., Springfield, MA; Apply online at: <http://jobs.samuelssportsbar.com> **07/08**

Recreation Specialists (2): Westover Job Corps Ctr., 103 Johnson Rd., Chicopee, MA 01022; 20 hrs./wk., Nights 4-10PM & 1 weekend day; Help teens engage in recreation & leisure learning programs, off & on campus; Driver's License; Email for more info. or send Resume to Ashley Godin, HR Mgr., at: godin.ashley@jobcorps.org

Graphic Designer: Adobe Illustrator, Photoshop, Outlook, Roland Versa or Onyx Thrive a plus; Prepare promotional materials for Sales Dept. & customer service; Apply in person (8AM-4PM) at Commercial Distributing Co. (CDC), 46 S. Broad St., Westfield, MA.

Lunch Cashier/Order Taker: Richard's Grinders, 420 Union St., Westfield, MA; Various days from 11am-2pm or 3pm; Sat. a must; Some light food prep, grinder making, cleaning, stocking; Will train; Bring Resume and/or fill application out in person. **07/01**

Deli & Customer Service: Notch Travel Ctr. & Between Rounds Bakery, 326 College Hwy., Southwick, MA; Will train; \$12/hr.; Work 3 nights/wk., 6-11:15PM; Apply in person or call Chrysti Jones, Mgr., 413-519-9486.

Rock 102 FM Road Crew (All Semesters): Assist with Special Events, Sales, Community, Concerts, set-up, drive van, etc.; Valid drivers' license, lift 60 lbs.; Send Resume to: jobs@rock102.com or mail Rock 102, 45 Fisher Ave., East Longmeadow, MA 01028; More info., call 413-525-4141. **07/01**

Legal Interns (Paid - All Semesters): Markey Barrett Attorneys, 1414 Main St., Ste. 830, Springfield, MA 01144; Work up to 20 hrs./wk. (more in summer); Assist with many aspects of office task mgmt., data entry, phones, filing, etc.; Great for CJ, Pre-Law, Bus. Majors; Email Resume & Cover Letter to Victoria Lyne at: vylyne@markeybarrett.com (413-273-7360 ext. 1001).

Swim Instructors & Lifeguards: YMCA of Greater Springfield OR Scantic Valley; Must be certified; More info. call or email Kim Lavallee at 413-739-6951 and kimlavallee@springfieldy.org or call 413-206-5724.

Accounting Intern (Paid): Grzelak, Grzelak & Assoc., 319 Meadow St., Chicopee, MA; Accounting Major; \$13/hr.; 12-20 hrs./wk.; **ASAP**; Send Resume to: info@ggaaccountants.com **07/01**

Marketing & IT Intern (Paid-All Semesters): Richards Jewelers, 461 E. Main St., Westfield, MA; Work Summer; Flex. days & times; Social Media, Marketing, Graphics, Promotions; Apply in person with Resume and ask to speak with Alena Dorosh. **07/01**

Wait Staff: Many shifts available; Exp. pref. but will train; Apply in person at Sorrento Pizza & Restaurant, 660 Kings Hwy., West Springfield, MA. **07/01**

Wait Staff/Cook/Bartender: Exp. pref. but will train; Tavern Restaurant, Westfield, MA; Apply in person.

Summer Lifeguards: All MA ponds & beaches; Must be certified; MA Dept. of Conservation & Recreation; Apply online at www.masslifeguard.com or go to <https://www.mass.gov/guides/dcr-lifeguarding> **07/01**

MGM Summer Jobs: MGM Casino, 1 MGM Way, Springfield, MA 01103; More info. & questions at: www.mgmspringfield.com/careers or call 413-273-5090.

Warehouse Selector: T&R Wholesale Foods, 745 Springfield St., Feeding Hills, MA 01030; \$12/hr.; Work Tues.-Fri. choices; Heavy lifting req.; Apply in person.

Sales Associate: Fastenal Store, 121 Summit Lock Rd., Westfield, MA; Work flex. sch., Mon.-Fri.; Valid driver's license; For more info. & to apply online go to: <https://careers.fastenal.com/details/336381> **ASAP!**

Warehouse Drivers/Loaders: Must lift or move up to 160 lbs. (kegs); Various hrs./days or nights; \$14.40 - \$15.65 Apply in person (8AM-4PM) Commercial Distributing Co. (CDC), 46 S. Broad St., Westfield, MA.

Swim Instructors: Wilderness Experience, 526 College Hwy., Southwick, MA; Teach children to swim; Certifications req.; More info. call Aubrey Cook, 413-569-1287; Website www.weu.com; Send resumes to: campweu@gmail.com **06/24**

Swim Instructor OR Certified Trainer: Roots Aquatics & Fitness, 217 Root Rd., Westfield, MA; Mornings on Tues., Thurs., Fri.; Questions call Danielle Kireyczuk at 413-568-2782; Apply in person; Quest.: Danielle Kireyczuk at: info@rootsaquatics.com **06/24**

Group Leaders: For Y's Kids Child Care Program at YMCA, 67 Court St., Westfield, MA; Work Mon.-Fri., 7AM-9AM; Apply in person; Contact Michelle Anamisis: manamisis@westfieldymca.org **06/24**

Seasonal Science Student Teaching Jobs: Student Teachers for "Mad Science" programs in New England; Fun with Science for children; No degree req.; Various days, hours and locations; Apply online at: <http://westnewengland.madscience.org/workforus.aspx/>

Childcare Workers: Work ALL Semesters; Work up to 20 hrs./wk.; Southwick Recreation Ctr., 64 Powder Mill Road, Southwick, MA; Recreation for Grades K-6; Flex.

schedule; Some hrs. M-F, 6:30AM-9AM or 2:20PM-6PM; Contact Michelle Beirne 413-569-3479 or 413-569-5950 or srscschoolage@aol.com **06/24**

Cashiers: Home Depot, 514 E. Main St., Westfield, MA; Will train; Flex. sch.; Apply in person or call Kate at 413-564-0680 ext. 077 or text 52270; These jobs are ongoing for all seasons. **06/24**

Wait Staff or Dishwasher: Experience pref. but will train; Apply in person w/ resume to Westwood Restaurant, 94 N. Elm St., Westfield, MA. **06/24**

Servers or Bartenders: Experience pref., but will train; Apply in person (with resume) at Shaker Farms Country Club, 866 Shaker Road, Westfield, MA. **06/24**

Home Health Aides/CNAs/Personal Care Aides: Visiting Angels; Flexible hours; Greater Westfield, MA areas; Must have some personal care exp. & references & car.; \$14/hour; Contact Joseph Arduino at 413-733-6900 or email Jarduino@visitingangels.com OR n.lopez@visitingangels.com; www.visitingangels.com

Warehouse Selectors: C&S Wholesale Grocers, 53 Summit Lock Rd., Westfield, MA; Flex. Hours; Training provided; Earn \$15/hour plus bonuses; \$300 College Bonus avail. every 3 months; Apply online with zip code 01085 at: www.weselectthebest.com/westfield **06/24**

*****Spring/Summer/Fall/Winter "CAMP" Jobs Various Deadlines – All Year Camps, Visit...**

<https://www.summercamps.com>; www.camppage.com;
www.greatcampjobs.com; www.masscamps.com;
www.campchannel.com; www.mysummercamps.com;
www.lohikan.com; www.badgercamp.org;
www.campjob.com; www.campabnaki.org;
www.maine.gov/doc/parks/mcc; www.campnashoba.com;
www.cody.org; www.campherrlich.org; www.campherrlich.org;
www.outdoors.org; www.valleykids.com;
www.inspireworksenrichment.com;
<http://brownstonepark.com/about/employment/>;
www.bluelake.org; www.ramapoforchildren.org;
www.springfieldjcc.org; www.badgercamp.org;
www.campatwater.org; www.okemo.com;
www.campgrelock.com/staff/staff_app.html;
<https://www.oobmaine.com/human-resources/pages/job-opportunities/>; www.springfieldy.org; www.campstarlight.com

For More Part-Time Job Listings Within Your Local "Zip Code", Visit...

www.masslive.com; www.LPjobs.com; www.allretailjobs.com;
www.usps.com/careers;
www.schoolspring.com/find/tutoring_jobs; www.indeed.com;
www.snagajob.com; www.simplyhired.com; www.tutor.com;
www.linkedin.com/studentjobs; www.craigslislist.org;
www.mass.gov; www.usajobs.gov; www.care.com;
www.careerbuilder.com; www.westernmassworks.com;
www.futureworksjobs.org; www.workspringfield.com;
www.state.ma.us/hrd/hrd.htm; www.gazettenet.com;
<https://massanf.taleo.net/careersection/ex/jobsearch.ftl#>;
<https://regionalhelpwanted.com/springfield/find-jobs/>

Disclaimer:

All hiring and compensation for work performed by student employees is handled directly between the student and the employer. The Westfield State University Career Center does not perform background checks on students applying for jobs, nor on employers posting job opportunities. Employers and students are encouraged to request reference information from each other as needed to establish qualifications, credentials, and overall fit between the employer and the student applicant. The Career Center makes no representations or guarantees about positions posted by this office. We are not responsible for safety, wages, working conditions, or any other aspect of off-campus employment. Students are urged to perform due diligence in researching employers when applying for or accepting private, off-campus employment.