



# REGIONAL PLANNING

Department of Geography, Planning, & Sustainability

**Dr. Brian Conz**

Department Chair

A blue rectangular sign with white text is mounted on two metal posts. The sign is positioned on the side of a dirt road that stretches into the distance. In the background, there are utility poles with power lines and a clear blue sky. The sign's text is centered and reads: 

**MAKE A DIFFERENCE  
WORK AS A  
REGIONAL PLANNER**



## WHY MAJOR IN REGIONAL PLANNING?

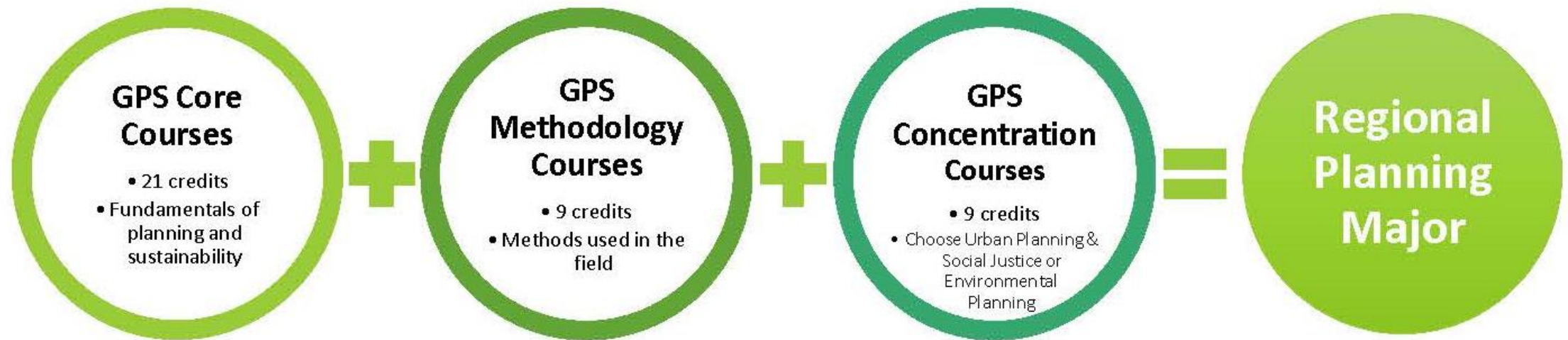
Geography, Planning, and Sustainability at Westfield State University

There are so many things you can do with a Regional Planning degree. The field of planning and sustainability is a fantastic one, and is very broad reaching. At the heart of planning is the desire to improve a community's quality of life. People with planning degrees work to do this in many ways and there are many different areas of planning in which planning professionals can focus – urban design, economic development, climate change, public participation, historical preservation, housing, and many others. A planning degree is also an excellent foundation for students who plan on continuing to graduate school for any number of fields such as architecture, public policy, natural resource management, law, and more.

Town/City Planner • Real Estate Developer • Sustainability Planner • GIS Analyst • Transportation Planner • Green Building Consultant • Municipal Government Worker • Non-profit Manager • Community Organizer • Historic Preservationist • Affordable Housing Advocate • Park Planner • Urban Designer • Research Analyst • Many other careers!



# Structure of the Regional Planning Major, 39 Credits Total



### GPS Required Core Courses (Majors take all)

Number	Course Name
GARP 0105	Introduction to Community Planning
GARP 0106	Environment, Sustainability, and Society
GARP 0216	The (Un)Just City
GARP 0219	Land Use & Resource Planning
GARP 0222	Site Planning Studio
GARP 0225	Legal Issues in Planning and Zoning
GARP 0391	Senior Seminar

### GPS Methodology Courses (Majors take 3)

Number	Course Name
GARP 0244	Into to Geographic Information Systems (GIS) (REQ)
GARP 0246	Quantitative Methods for Social and Physical Sciences (REQ)
GARP 0243	Introduction to Remote Sensing
GARP 0340	Data Collection and Analysis
GARP 0343	Advanced Remote Sensing
GARP 0344	Advanced Geographic Information Systems (GIS)
GARP 0247	Cloud GIS
GARP 0360	Field Methods
GARP 0365	Geoprocessing

### GPS Concentration Courses

(Majors choose 1 concentration and take 3 courses from that list)

#### Concentration: Urban Planning and Social Justice

Number	Course Name
GARP 0204	Housing in America
GARP 0213	Travel and Tourism Planning (or)
GARP 0218	Recreation Geography
GARP 0217	Contemporary Global Issues
GARP 0252	Cities of the Global South
GARP 0314	Transportation Geography
GARP 0325	Food Systems Planning
GARP 0380	Public Participation
GARP 0352	Planning Green and Sustainable Cities
GARP 0350	Internship
GARP 0399	Independent Study

#### Concentration: Environmental Planning

Number	Course Name
GARP 0206	Climate Change
GARP 0230	Meteorology (or)
GARP 0230	Severe and Unusual Weather
GARP 0236	Environmental Analysis II
GARP 0238	Environmental Impact Analysis
GARP 0245	Sustainable Energy
GARP 0250	Political Ecology
GARP 0251	Water Resource Planning and Management
GARP 0311	Regional Geography of Latin America & the Caribbean
GARP 0317	Special Topics
GARP 0350	Internship



# SHAPING OUR FUTURE

---

*Community Planning Basics for Happier,  
Healthier, and More Sustainable Cities*



PRELIMINARY EDITION  
DRISTI NEOG

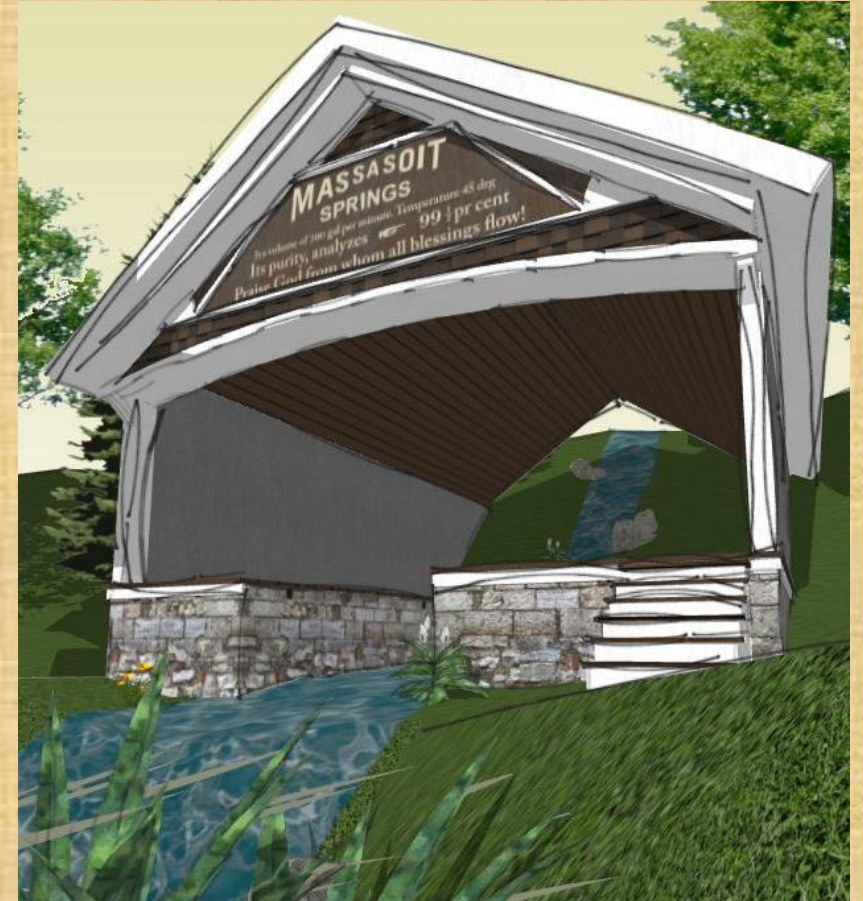
# The GPS Faculty

- **Brian Conz**, Ph.D. Environment and Society, Regenerative Design, Central America
- **Robert S. Bristow**, Ph.D., Tourism Planning, Site Planning, Recreation Geography
- **Karl K. Leiker**, Ph.D. Meteorology, Climatology, Severe Weather
- **Carsten Braun**, Ph.D. Glaciology, Climate Change, Sustainable Energy, GIS
- **Timothy LeDoux**, Ph.D. GIS, Sustainable Food Systems, Urban Geography
- **Dristi Neog**, Ph.D. Sustainable Transportation Planning, Planning Theory
- **Sam Ndegeah**, Ph.D., Cities of the Global South, International Development
- **Alina Gross**, Ph.D. Housing, Public Participation, Planning for Equity



# Cutting-Edge Technical Skills

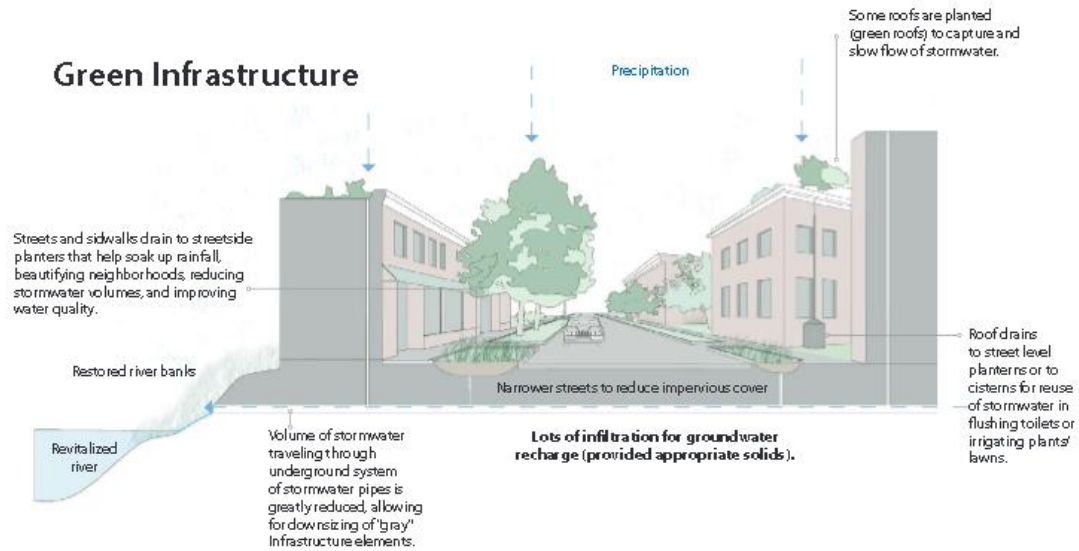
- **Geographic Information Systems (GIS)**
  - Spatial analysis and computer mapping
  - Applications across disciplines
- **Remote Sensing**
  - Aerial and satellite photography analysis
  - Creation of high resolution images graphics
- **3-D Modeling**
  - Physical models including 3-D printing
  - Computer visualization for design



Student Created 3-D Visualization of Historic Structure Using Google SketchUp

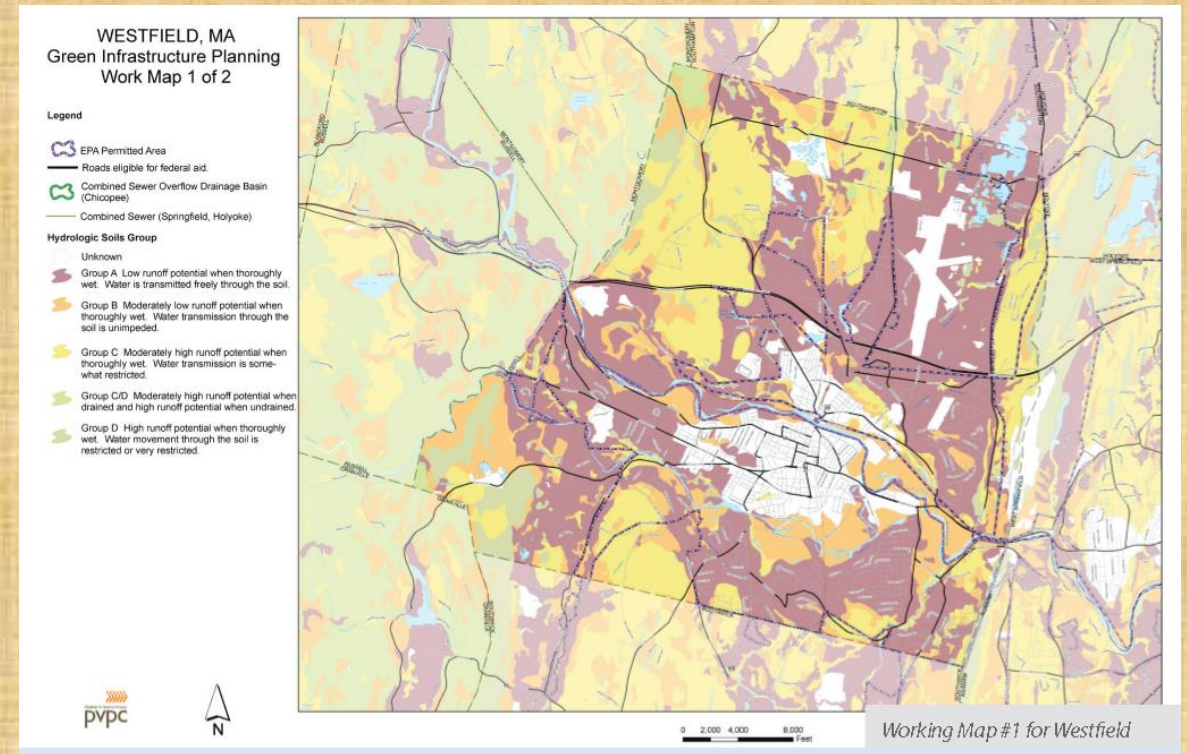
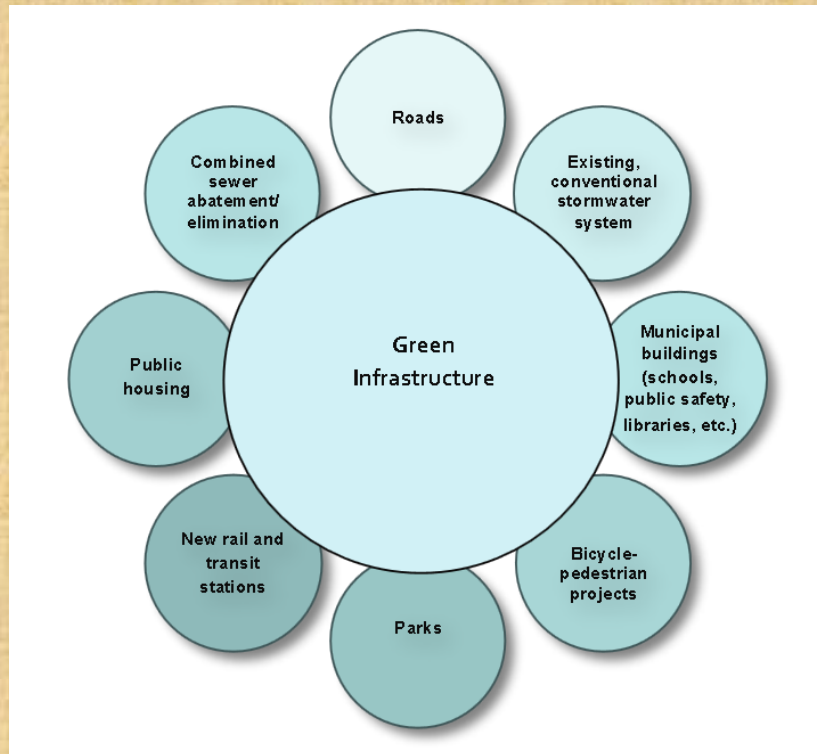


# Green Infrastructure



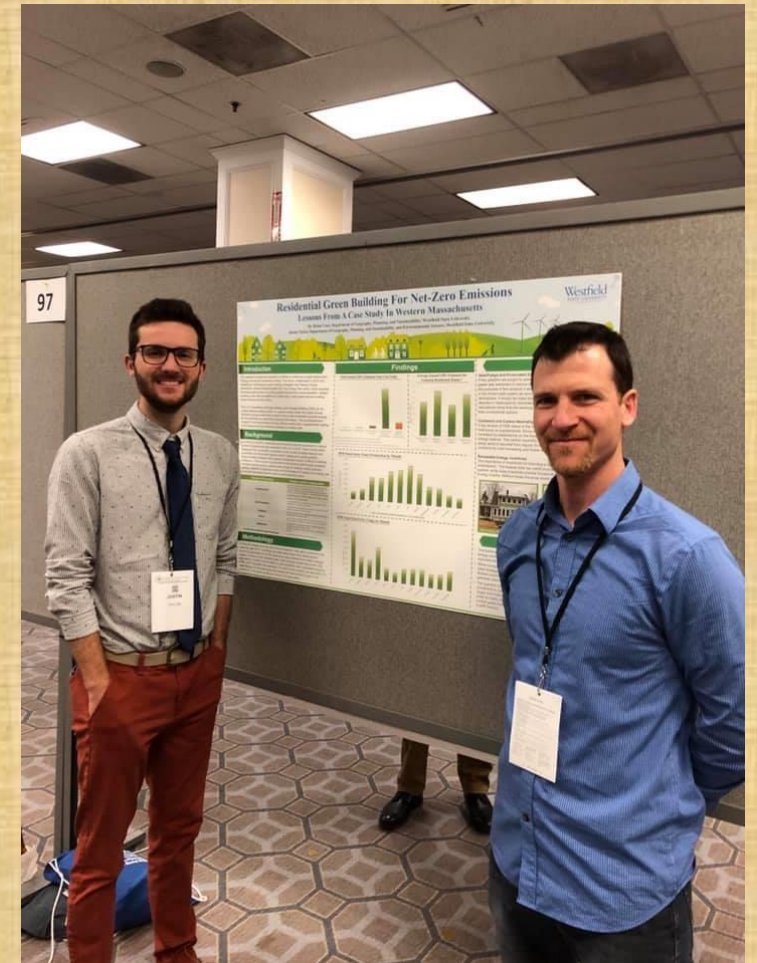
# Graphic Visualization of Green Infrastructure

Source: Pioneer Valley Planning Commission



# Hands-on, Experiential Learning

- **Lab and Studio classes**
  - State-of-the-art computer lab and dedicated studio space
  - Map, measure, model, design, create!
- **Collaborative research and problem solving**
  - In student groups and with faculty mentors
- **Community engagement/community-based learning**
  - Direct experience collaborating with local organizations
- **Travel opportunities**
  - Class field trips, study abroad, domestic exchange, department-sponsored trips, conferences
- **Internships**
  - With planning agencies, engineering firms, conservation organizations, community-based groups



Student-faculty research presentation  
American Association of Geographers, Washington D.C.





**Fieldwork on the Appalachian Trail**

# GPS Students Research and Engagement



**American Planning Association Meeting**



**Undergraduate Research Conference**



**Westfield Boys and Girls Club Stakeholder meeting**





**Community-based  
Conservation and  
Agroecology  
Belize, C. A. , 2017**





**Environmental Planning Club  
with Coal River Mountain Watch,  
A grassroots environmental justice  
organization in West Virginia, 2018**



**Dr. Brian W. Conz**  
**Department Chair**  
**Geography, Planning, and Sustainability**  
**Wilson Hall 203**  
**[bconz@westfield.ma.edu](mailto:bconz@westfield.ma.edu)**  
**(413)572-8084**