



# REGIONAL PLANNING ALUMNI NEWSLETTER

## Chelsey Poulsand (REPL 2017) Earns Stephanie B. Kelly Award

The GARP Faculty presented the fifth **Stephanie B. Kelly Regional Planning Award** to graduate Chelsey Poulsand. Chelsey, from Millbury, MA is a Geography and Regional Planning major. Her minors are Geographical Information Systems and Applied Geography. After graduation, Chelsey will pursue full-time work in planning and advanced study for a Masters in Transportation planning. Long term, she would like to be a transportation planner with a focus on traffic design analysis, safety and engineering in large cities. Her most memorable experiences were serving as President of Lambda Sigma National Honor Society, and President of the Environmental Club. Chelsey studied abroad in Costa Rica. She landed a job at the Central Massachusetts Regional Planning Commission!

### Inside this issue:

Senior Awards	1
New Faculty	2
Faculty News	2
Alumni Bios	3-4
Graduates and Alum	5
More news	6

## Heathman and Goldman earn Academic Excellence



From left to right: Robert Bristow, **Maxwell Goldman** and **Chelsey Poulsand** with **President Ramon S. Torrecilha**. (absent from photo **Tameika Heathman**)

### Maxwell Goldman

Maxwell is a Regional Planning major from Hingham, MA. His favorite Westfield experience was a summer internship in 2016 when he worked with the town of Marshfield, MA to improve handicapped accessibility in public parks. The research and recommendations that he provided helped contribute to a series of improvements, and allowed people with disabilities the opportunity to enjoy the outdoors. He

will always remember how great it felt to help others. Maxwell thanks Westfield for preparing him with the skills needed to make a difference.

### Tameika Heathman

Tameika is a senior from Springfield, MA. She majored in Regional Planning with a minor in History. After graduation, she will move to Boston and work in a housing program. She has a passion for ensuring everyone has a stable home as a first step to meeting all of one's needs. Not having a stable home (being in foster care) inspires her to want to make sure everyone has a stable home. Her favorite Westfield experiences have been defined by the support she has received from the Geography and Regional Planning staff. The GARP Office is her safe place, and the staff, the village that takes care of her. The GARP Department, especially Marijoan Bull, provided her with so many opportunities and helped her to build on her potential.

### Coming fall events

- GIS Day in November (<http://www.gisday.com/>)
- SNEAPA in Providence RI, 26-27 October 2017. (<http://www.sneapa.org/>)
- NESTVAL in Hartford, CT 20-21 October 2017 <http://aagnestval.wpengine.com/>

## Prof. Alina Gross joins faculty

Please welcome Dr. Alina Gross who will join the GARP department in the fall. Dr. Gross has a PhD in Planning (UMass 2014), a Master of Regional Planning (UMass 2008) and a BA in Sociology from Connecticut College (2006). Her university teaching experience started at UMass and after graduation she continued teaching at several schools in Massachusetts including WSU as some of you know.

Her professional experience is extensive in Massachusetts and elsewhere, working for the Center for Economic Development (UMass) and then in several local communities including Montgomery, Sudbury, Northampton, Greenfield and most recently Holyoke. She is currently a Development Project Associate at The Community Builders, a non-profit developer in Northampton. There Dr. Gross has led efforts to link affordable housing with funding opportunities in several urban redevelopment projects in the Pioneer Valley.

Dr. Gross has also been active in the American Planning Association with the Community Planning Assistance Teams where she engaged citizens in public participation for neighborhood revitalization efforts. She has presented her research at multiple conferences including the Association of the Collegiate Schools of Planning Conference, International Association for Public Participation North American Conference and the Cultural Landscapes and Heritage Values Conference.



## GARP Faculty Scholarship

**Braun, C.** (2017). The surface mass balance of the Ward Hunt Ice Shelf and associated Ice Rise. Chapter 6 in Copeland, L., and Mueller, D. (eds.) *Arctic Ice Shelves and Ice Islands*, Springer Verlag.

Serreze, M.C., Raup, B., **Braun, C.**, Hardy, D.R. & R.S. Bradley, (2017). Rapid Wastage of the Hazen Plateau Ice Caps, Northeastern Ellesmere Island, Nunavut, Canada. *The Cryosphere*, 11, 169-177.

**Bristow, R.** & Jenkins, I. (in press). Travel behaviour substitution for a white-water canoe race influenced by climate induced stream flow" *Leisure/Loisir*.

**Bristow, R.** & Jenkins, A. (2018). Assessing the Global Sustainable Tourism Criteria. *European Journal of Tourism Research*.

**Bristow, R.** Organized and chaired a Recreation, Tourism and Sport Specialty Group session "An exploration of dark liminal spaces in tourism" at the American Association of Geographers, Boston, April 2017.

**Bull, MJ & Gross, A.** (2018). *Housing in America*, undergraduate textbook, under contract with Routledge.

**Bull, MJ.** (in press). Data, Accountability, and the Public: Using Community Reinvestment Act Data for Local Community Development, *Cityscape*, Office of Policy Development and Research (PD&R) of the U.S. Department of Housing and Urban Development.

**Bull, MJ.** (November 2016/May 2017). invited participant, Public Administrators and Participation Research Group, Kettering Foundation, Dayton, OH.

**Emlinger, A.** Organized and Chaired "Do we Have a Climate for Change? Insights about adaptation planning actions in Coastal New England" at *Southern New England APA Conference (SNEAPA)*, Worcester, MA, October 2016.

**Emlinger, A.** Are We Stepping Up the Adaptation Ladder?, Paper presented at *American Collegiate Schools of Planning (ACSP)*, Portland, OR, November 2016.

**Emlinger, A.** Juntando a Fome com a Vontade de Comer: Acknowledging the suitability of bike infrastructure as a way to promote justice, equity and community engagement in Prado, Brazil", paper presented at the *American Association of Geographers* meeting held in Boston, in April 2017.

**Conz, B. & LeDoux, T.** Urban Agriculture, Social Justice and University Community Partnerships: Notes From the Field'. Poster presented at the *American Association Geographers Annual Meeting*, Boston, MA, April 2017.

**Conz, B. & LeDoux, T.** Long Live the League of Gileadites!: Story Mapping Abolitionism with 8<sup>th</sup> Graders in the Era of Black Lives Matter. Paper presented at the annual meeting of the *New England/St. Lawrence River Valley Geographical Society*, Sherbrooke, Quebec, October, 2017.

**LeDoux, T. F., Vojnovic, I., Thomas, J. M., & Pothukuchi, K.** (2016). Standing in the Shadows of Obesity: The Local Food Environment and Obesity in Detroit. *Tijdschrift voor economische en sociale geografie* (Journal of Economic and Social Geography). doi:10.1111/tesg.12227.

**LeDoux, T. F. & Conz, B.** (2017). Hunger for Justice: Building Sustainable and Equitable Communities in the Pioneer Valley. In: Winkler-Prins, A. (ed.) *Global Urban Agriculture: Convergence of Theory and Practice between North and South*, CABI International.

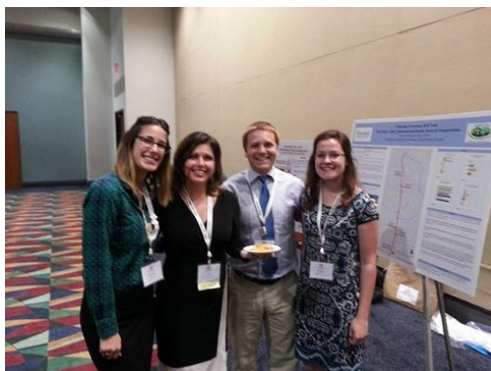
**LeDoux, T.F.** Doing Geography II: Teaching with Webmaps in the Lower Division Classroom, presentation at the American Association of Geographers Annual Meeting, Boston, MA, April 2017.

**Neog, D.** The effect of light rail systems on urban form: A spatio-temporal analysis of selected light rail systems on urban density. Paper presentation in the *Annual Meeting of the American Association of Geographers* in Boston, MA, April 2017.

**Neog, D. & Ana Emlinger** Do we have a climate for change? Insights about adaptation planning actions in coastal New England at the *Southern New England APA* annual conference in Worcester, MA. October 2016.

Contribute to our scholarship fund at [www.westfieldalumni.org](http://www.westfieldalumni.org)  
Be sure to specify GARP Fund!

## Alumni news



Past, present and future planners at SNEAPA 2017! From left **Marianne Iarossi** (2010), Prof. Emlinger, **Robert Hummel** (2013) and new graduate **Chelsey Poulsand** (2017) meet at Worcester in fall 2016.

**Paul Mission**, (1985) Transportation Planning Manager as he enters his 30th year of planning at the Southeastern Regional Planning and Economic Development District (SRPEDD). As the Transportation Planning Manager, I have the pleasure of working with fellow alumni from the "Fighting Owls" including Shayne Trimbell (2004), Kyle Richards (2014), and Stephanie Lenhardt (2015), all in the Transportation Planning Section of the agency.

The hiking crowd from the nineties are still active (photo Mt. Moosilauke)

**Joe Liquori** (1992) still enjoys hiking trips (inspired from GARP0218) and goes with his son up Skinner Mtn.

**Linda Webster** (1992) is a realtor for Coldwell Banker (<http://www.ljwebster.com/>).

**Ed Downes** (1992) is a Digital Marketing Strategist at SevenFigure-Marketing.com.

**Mike Downs** (1992) is using his computer mapping and GIS skills as DB administrator at Way Finders (formerly Haphousing).

**Melissa Santucci Rozzi** (1998) I was promoted to assistant director of planning and community development (newly created position) in Braintree and I am also serving my 3rd 5 year term as CHAIR of the Zoning Board in Watertown. Melissa helped jury the Senior Seminar this spring!

**Matt McKay** (1999) Ph.D. student at University of Florida and recently published in 2015. "Reflecting on access to common property coastal resources via a case study along Connecticut's shoreline". *Environment, Space, Place* 7(1): 68-104.



**Jeff Hescocock** (2002) is the Director of University Emergency Management & Business Continuity (UMASS) and is scheduled to teach our disaster course next spring. Website <https://ehs.umass.edu/emergency-management-and-business-continuity>

**Shayne Trimbell** (2004) Braving sub-zero temperatures and winds in excess of seventy miles per hour, made a successful trip to the summit of Mount Adams in New Hampshire's Presidential Mountain Range to celebrate President's Day 2017. The winter summit has been a personal challenge and hiking goal of Shayne for several years and he is excited to have been successful. He is now setting his sights on a much bolder challenge: a winter traverse of the Presidential Mountain Range.

**Ryan Wingerter** (2006) Upon his graduation in 2006, he was hired by the Springfield Water and Sewer Commission as a construction inspector. Since then, he became the Deputy Director of Wastewater Operations, including construction, maintenance, treatment, capital planning, etc. Ryan also married his college sweet heart, Kathryn Bentley who graduated from Westfield State in 2007 as a Severe Special Ed major. Upon the completion of her Masters Degree at Lesley University we wed in 2010. We recently welcomed our third child in October of 2016.



**Andrew Strniste** (2008) is transportation planner at CT Department of Transportation. See his website <http://www.ct.gov/dot/site/default.asp>

**Lisa Donahue** (2010) is getting married this summer and living in Des Moines IA. She works in Higher Education as a Hall Director at Grand View University. Website <http://www.grandview.edu/>

**Aaron D'Amario** (2010) is Senior GIS Specialist at Hatch Mott Macdonald. GISers get jobs!

**Ashley Eaton** (2013) Started a new job at the Pioneer Valley Planning Commission in 2016! She is also traveling to Uruguay and Peru in April as a US Fellow through the State Department's Bureau of Educational and Cultural Affairs to learn about environmental sustainability. See <http://www.pvpc.org/>

**Shawn Bailey** (2013) is Transportation Planner at Old Colony Planning Council.

**Jimmy Pereira** (2013) Running for Mayor of Brockton! Visit <http://www.JimmyforBrockton.com>



**Robert Hummel** (2013) is a town planner town of Acton and is very active at SNEAPA ([www.sneapa.org](http://www.sneapa.org)).

**Matt Belmore** (2013) is a planner for Eversource Energy. Energy planning is hot!

**Kevin Denault** (2012) is a Coastal Resilience Specialist with The Nature Conservancy.

**Robert Raymond** (2012) is Assistant Planner at Central Massachusetts Regional Planning Commission and is now joined by **Chelsey Poulsand** (2017).

**Nicholas A. Armata** (2013) Started a new position as a Planner I at Milone and MacBroom in Cheshire CT. He is also a board member for the Hartford iQuilt Program which has a mission dedicated to making downtown Hartford a more walkable and community driven neighborhood. More information on the program can be found here: <http://theiquiltplan.org/>

**Robert Downey** (2013) is an Assistant Planner for Southfield Redevelopment Authority, Weymouth MA.

**Ivette Morillo** (2014) Program Associate, Housing Partnership Network, Boston, and helped jury our seniors.

**Ted Dobek** (2015) is opening Circuit Coffee in downtown Westfield at 22 Elm Street. For more info see <http://www.CircuitCoffee.co>

**Ola Smialek** (2015) was awarded her MRP from UMass this May 2017! Congrats to Ola.

**Tory Levitte** (2015) is a Planner at Two Rivers-Ottauquechee Regional Commission and works on GIS Mapping, Emergency Management and enjoys the Vermont outdoors.

**Michelle Coombs** (2016) is protecting our planet by working for the Federal EPA.

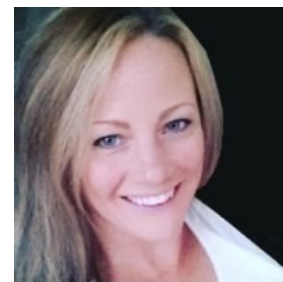
**Pat Burns** (2016) works in the City of Lowell, MA.

###

## Lynelle Kuzontkoski joins department

Lynelle is our new Administrative Assistant with a joint appointment in GARP and POLS. It has been 18 months since Bev Zeigler retired. During the interim, Melissa Rutkowski served as a temp part-time receptionist.

Lynelle as many of you know was most recently in the Office of Academic Affairs and prior to that she worked at Holyoke Community College and Western New England University—School of Law. She is learning all your names as she updates the alumni mailing list for the department. She can be reached at [lkuzintkoski@westfield.ma.edu](mailto:lkuzintkoski@westfield.ma.edu).





Connor Murphy, Daniel Holbrook, Christopher Bennett, Chelsey Pousland, Seth Carne, Megan Fountaine, David Nolan, Tameika Heathman, Maxwell Goldman, Amanda LaFrance, Alexa Repko!

## More Alumni News

Staci Hulseberg, Director of Planning in Glen Ellyn, Illinois and member of the class of 1990. Was recently recognized in the Chicago Tribune.

"(City) planners can work directly with residents, business owners and developers to mitigate issues, solve problems, create programs and enhance processes which will hopefully improve the community for years to come," she said. "We are able to invite the public to share their visions for the future of the community, then use that information to develop plans that prepare a path to achieve those goals."



Hulseberg, 46, has been a planner for 11 years. Before taking the job in west suburban Glen Ellyn, she served as village planner/assistant community development director in Hanover Park and planning and development director in Woodridge. She supervises a staff of 15 full- and part-time employees and a few consultants.

Hulseberg and her team manage a long list of public services, such as building-permit plan review, building permit inspections, reviews of new developments, additions and remodeling, long-range comprehensive plans, and enforcement of village codes and ordinances.

Read the complete article at <http://www.chicagotribune.com/business/careers/sns-201503261530--tms--career-carer-b20150329-20150329-story.html>

## MJ Bull Retires

MJ Bull has announced her retirement. We are saddened to hear this, but are pleased to know that she will return in the fall as an adjunct to teach two planning classes..



The added free time will permit MJ to finish her new book *Housing in America* (Routledge). Her expertise in public participation has been particularly useful for our many programs and those students in the Master's of Public Administration.

We wish her the best as she enters the next phase of her career.

The GARP department has a proposal to replace MJ with a planner in public health. We hope to build partnerships with the health sciences on campus. Any help from Alumni will be appreciated.



CELEBRATE  
PATHWAYS  
TO EXCELLENCE



Nathan Moreau and Katherine Baldiga, both class of 2018, talk about their research.

Westfield State University  
Wilson Hall 203  
577 Western Avenue  
Westfield, MA 01086

Phone: 413-572-8315

**Westfield**  
STATE UNIVERSITY

[www.westfield.ma.edu/garp](http://www.westfield.ma.edu/garp)

**Got News?**  
Email us!

We're on   
**facebook**  
...come & join us

A social networking site for all friends of the  
Geography and Regional Planning Department  
at Westfield State University  
Join "Friends of GARP"

For more news <http://www.westfield.ma.edu/prospective-students/academics/geography-and-regional-planning/garp-current-news-events/>

Prof. Ana Emlinger has ended her one year temp faculty position in GARP. We wish her the best in future.



## Message from the Chair

This will likely be my last **GARP Alumni Newsletter** since I will be stepping down as chair in January 2018 to start a sabbatical. Brian Conz will become the interim chair for the spring term. It will be 16 years as chair and I want to return to fulltime teaching and research. My time at Westfield has been good. Preparing this newsletter reminds me of the greatness of our students and faculty. It is so cool to hear from the alum, even if it is just to tell me about a hike. You can see some of the newsletters on the website link that Carsten Braun has created (<http://www.westfield.ma.edu/academics/geography-and-regional-planning-department/newsletters>).



While I have not been here as long as Karl Leiker, I have seen lots of changes over the years. First and foremost was that department faculty really did not change much in the 1990s. Except for Karl and me, all the current faculty arrived at Westfield after 2006! (I guess I am one of the old f\*rts?)

Second is the new department suite and lab spaces in Wilson Hall. Wilson 203, the GARP Suite, is a popular place for students to hang out and work on GIS projects (and sometimes SPSS)! Our two new labs are across the hall and you can imagine how nice that is. Wilson 202 is a combination physical geography lab and a planning studio. Next door is W202a and houses our computer lab. That room gets a lot of use as you might expect. The new spaces in Wilson bring the bulk of GARP together, although we still teach classes in Bates (Garden Level) Room 05.

One thing that hasn't changed that much are the students. I know I speak for my colleagues to say the GARP students are great. Even if your future isn't in planning or geography, we are pleased to know that our time together was a chance for both of us to grow a little bit. This is the real joy of preparing this newsletter since it gives me a chance to recall the past year of accomplishments.

Further our program continues to partner with many on campus. Beside Environmental Science, the degree we created back in the nineties, we work with History, Political Science, Criminal Justice, Ethnic and Gender Studies and Sociology to name just a few.

The future is promising for our program. We have great partnerships with colleagues on and off campus. And while we are sad that Prof Bull has retired, we are hopeful that we can replace her with another planner to make our major even greater!