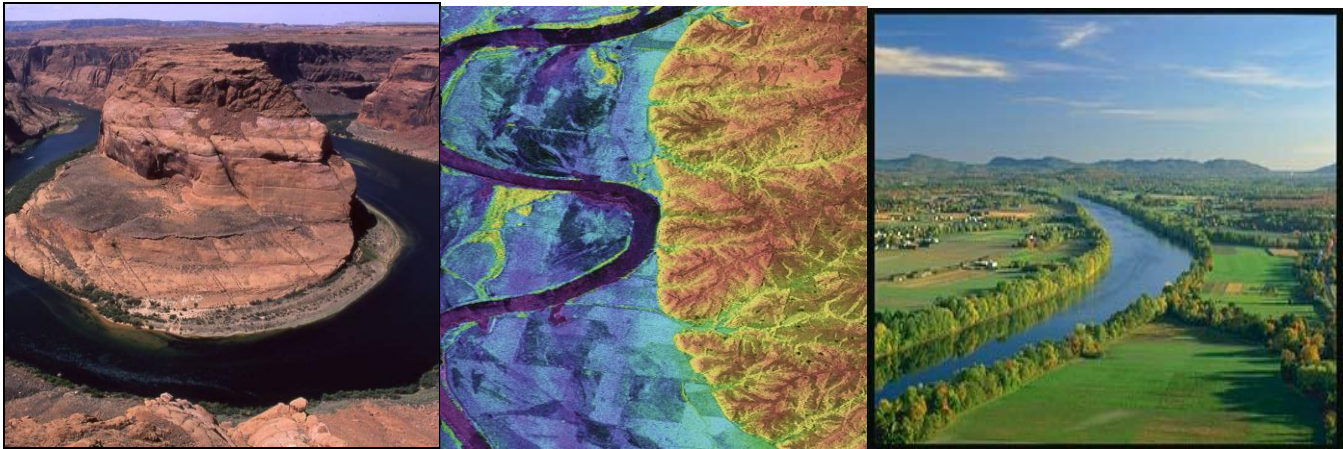


# ***Introduction to Physical Geography - Online***

(GARP 0102, 4 credits)

**Fulfills the Lab Science Common Core requirement**



## **Course Overview**

Why is the Sahara Desert dry? Why are the Amazon Basin and African Congo wet? What are the causes and consequences of global warming? Where and why are there mountains? Physical geography addresses such questions by describing the spatial distribution of climate, water, soil, topography, and biota at the Earth's surface, the functional interactions between them, and their relationships with people. In this course we will study the basic forces governing the distribution and flow of mass and energy over the Earth's surface, and will apply knowledge of those processes to better understand major environmental problems including climate change, pollution and desertification.

My goal for this course is simple: I want to get you excited about the Earth and the natural environment that surrounds you every day. Physical Geography is actually quite applicable and useful on a daily basis: You will learn what goes on around you and why! So, the next time it rains or snows, or you come across a river or lake, you will know why, how, and so what!

**No prerequisites.**

**Instructor:** Michael Lally    mlally@westfield.ma.edu

