

Cool Stuff with Google Earth! (and more!)



1) Google Maps!

Google Maps is fun!

You can switch between 3 different views of the world:

- Map
- Satellite
- StreetView



Here is a fun video to learn more about Google StreetView!

<http://www.youtube.com/watch?v=f0y-q-pI2pQ>

Activities

1. Find your school and switch between the Map View and the Satellite View.
2. Activate StreetView and see what your school looks like!
3. Close StreetView and search for Westfield State University.
4. Click on Get Directions and enter Ludlow High School as A and Westfield State University as B and hit Enter. How many miles is it?

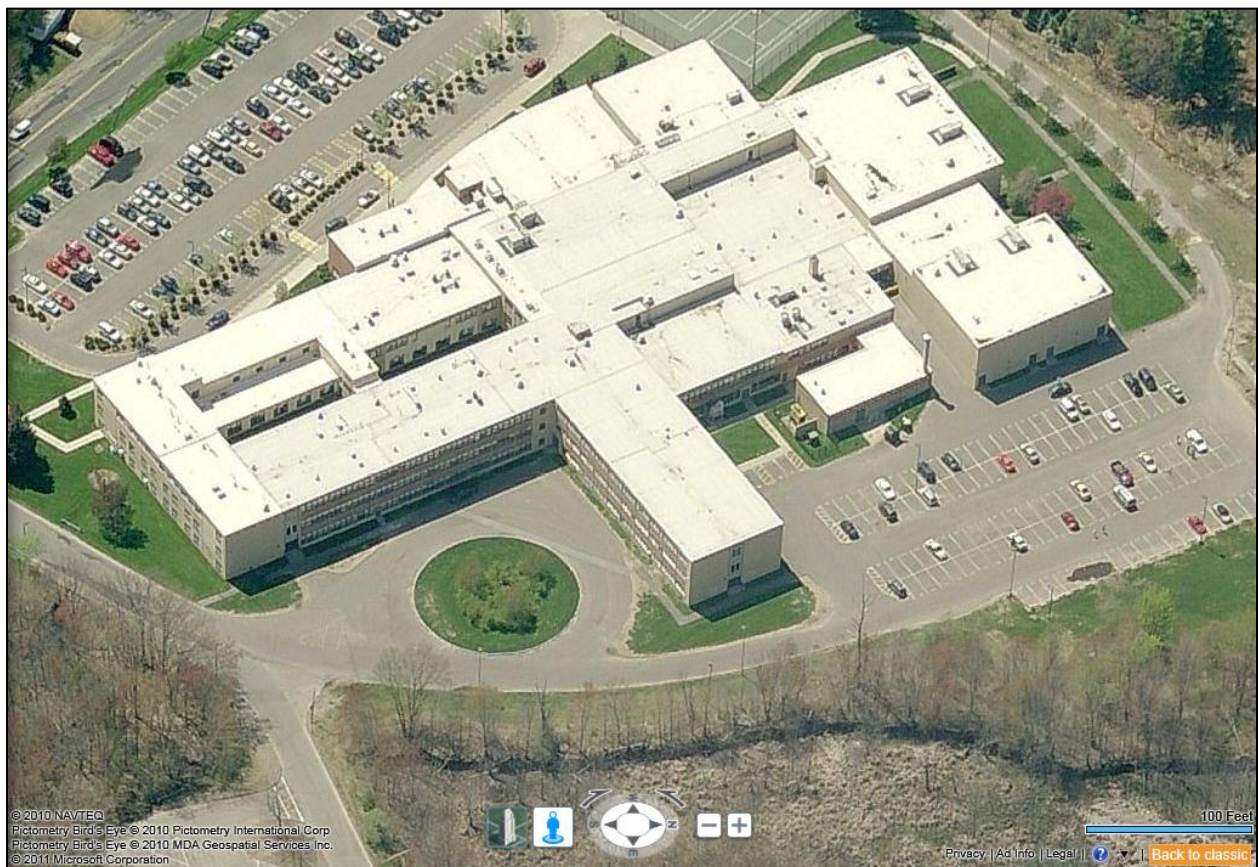
_____ miles

2) Bing Maps!

Bing Maps is even more fun – you can use the Bird’s eye view to look at the world from the view of a bird!

Activities

1. Search for Baird Middle School, Ludlow, MA and select the Bird’s eye view as in the picture below. Fly around!



2. Search for your house and see what it looks like for a bird!
3. Search for Fenway Park – fun!
4. Search for the White House – do you notice a difference?

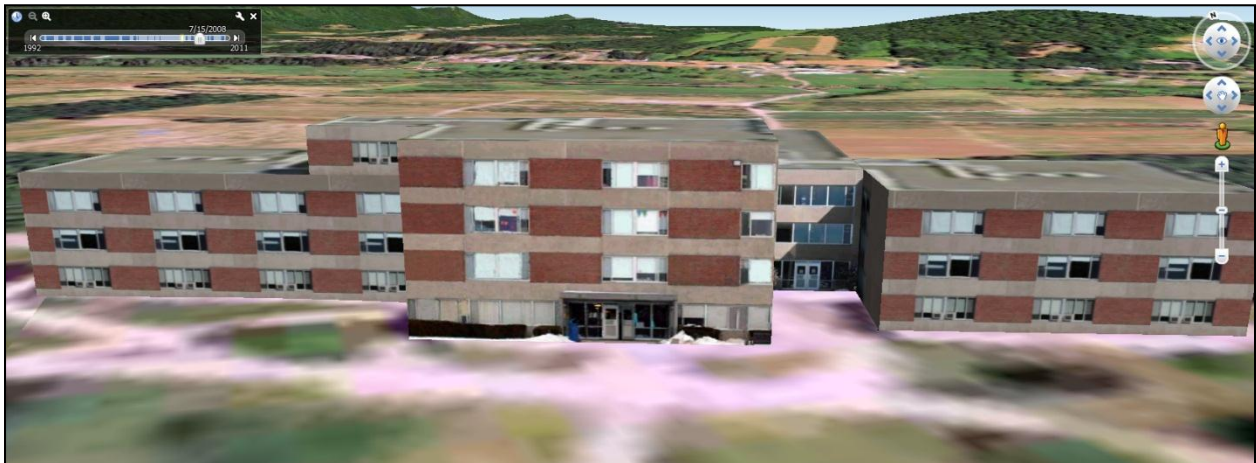
3) Westfield State in 3D!



Take a Campus Tour in Google Earth!

1. Start Google Earth.
2. In the Layer Pane: Uncheck everything except Borders and Labels and 3D Buildings. This makes the screen less cluttered.
3. Fly to Westfield State University.
4. Use the viewing controls to tilt and rotate your view!

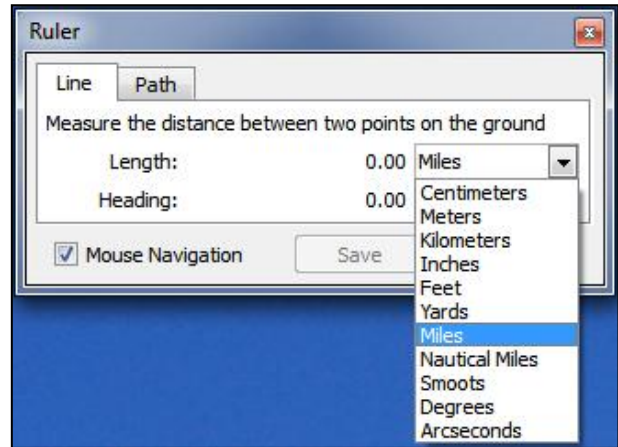
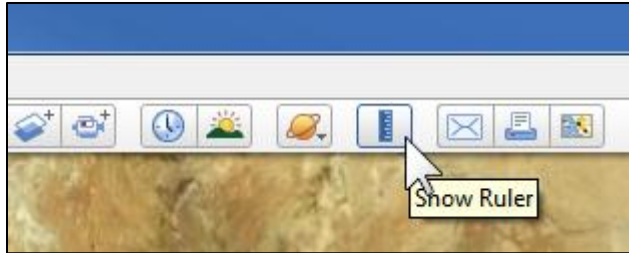
You can now see most campus buildings ‘popping-out’ as 3D models. Fly around the campus and take a look at these buildings – all sides are realistic!



5. Fly to Paris and look at the Eiffel Tower!
6. Fly to the White House and the Capitol Building in Washington DC!
7. Fly to Gillette Stadium!
8. Fly to the Golden Gate Bridge and take a tour of San Francisco!

4) Measure Distances in Google Earth!

You can easily measure distances in Google Earth – both simple straight-line, but also paths with many twists and turns. Click on the Ruler Tool in the toolbar to activate the ruler.



Activities

1. Fly to your school and measure the length of the football field – is it really 100 yards?
2. How long are the two basketball courts near the Middle School?

Court 1: _____ feet

Court 2: _____ feet

3. Fly to Washington DC and measure the walking distance between the White House and the US Capitol!

Walking Distance: _____ miles

5) Make Your Own Map with Google Earth!

Making your own maps with embedded videos from YouTube and cool 3-D effects is fun! Here are some great tutorials for more practice and information.



- These are great video tutorials:
<http://earth.google.com/outreach/tutorials.html>
- Here's a list of all available tutorials (video and illustrated text):
<http://earth.google.com/outreach/tutorials.html#tab1>
- This tutorial shows you how to add your own pictures and videos to Google Earth: http://earth.google.com/outreach/tutorial_annotate.html
- This tutorial shows you how to add cool 3D views in Google Earth:
http://earth.google.com/outreach/tutorial_snapshotviews.html

