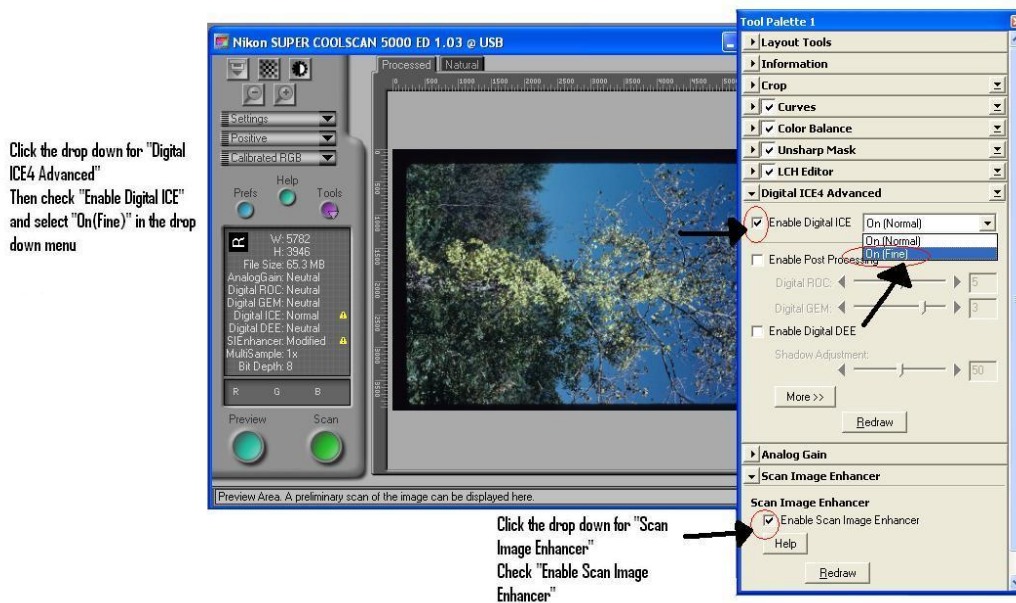
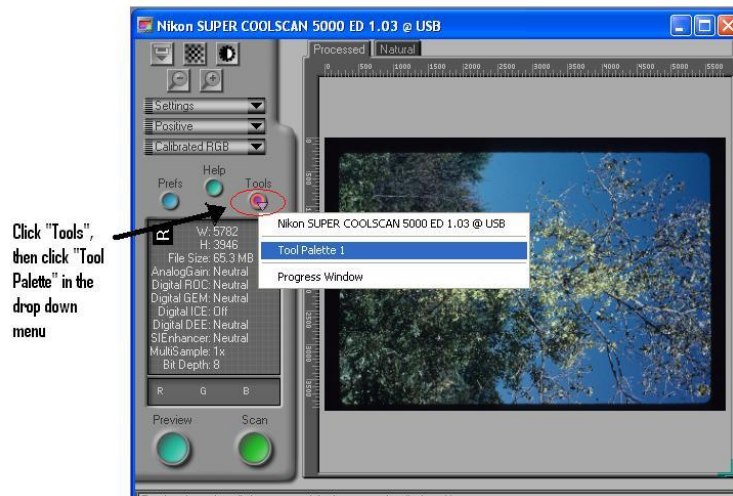


Nikon Super Cool Scan 5000 Instructions

1. Push in power button to turn on.



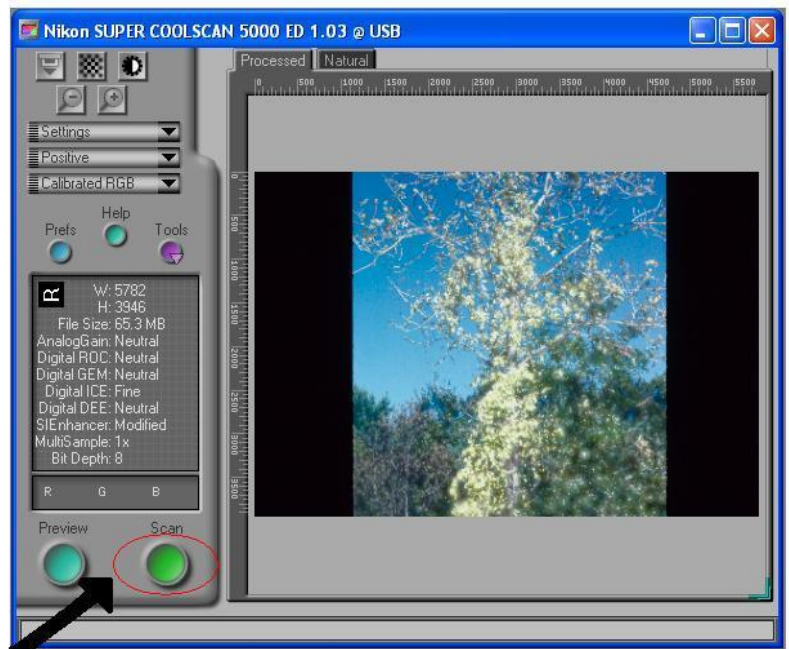
2. Open Nikon Scan icon on the desktop (Dell laptop in Streaming Room).
3. Open the Tool Palette if it is not open, and follow the instructions below.



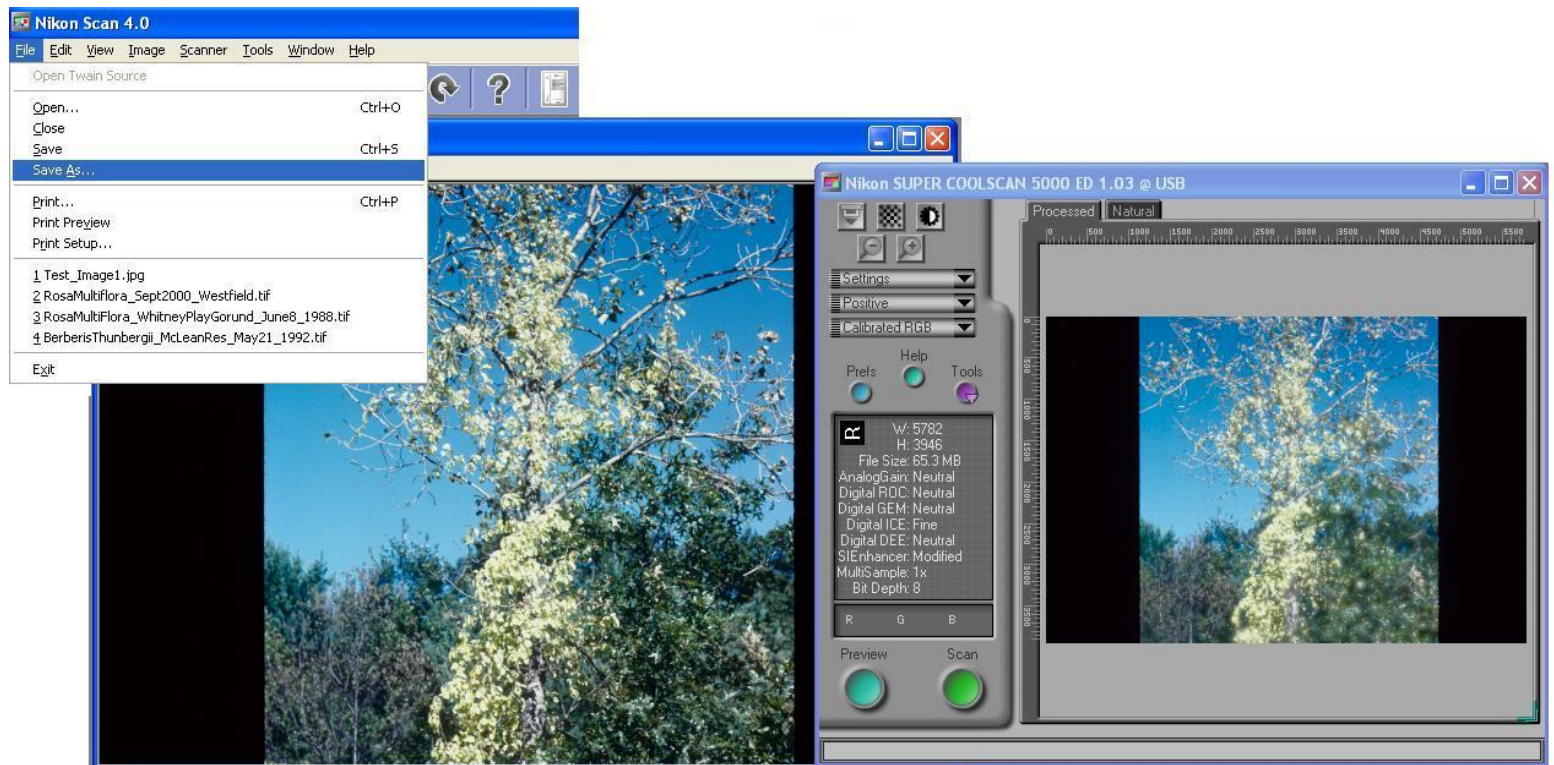
4. Spray both sides of the slide with compressed air to remove any dust.
5. Insert slide into the scanner.
 - **Note:** Most slides have an arrow underneath that shows which way to enter the slide into the scanner
6. Once slide is inserted, select Preview.



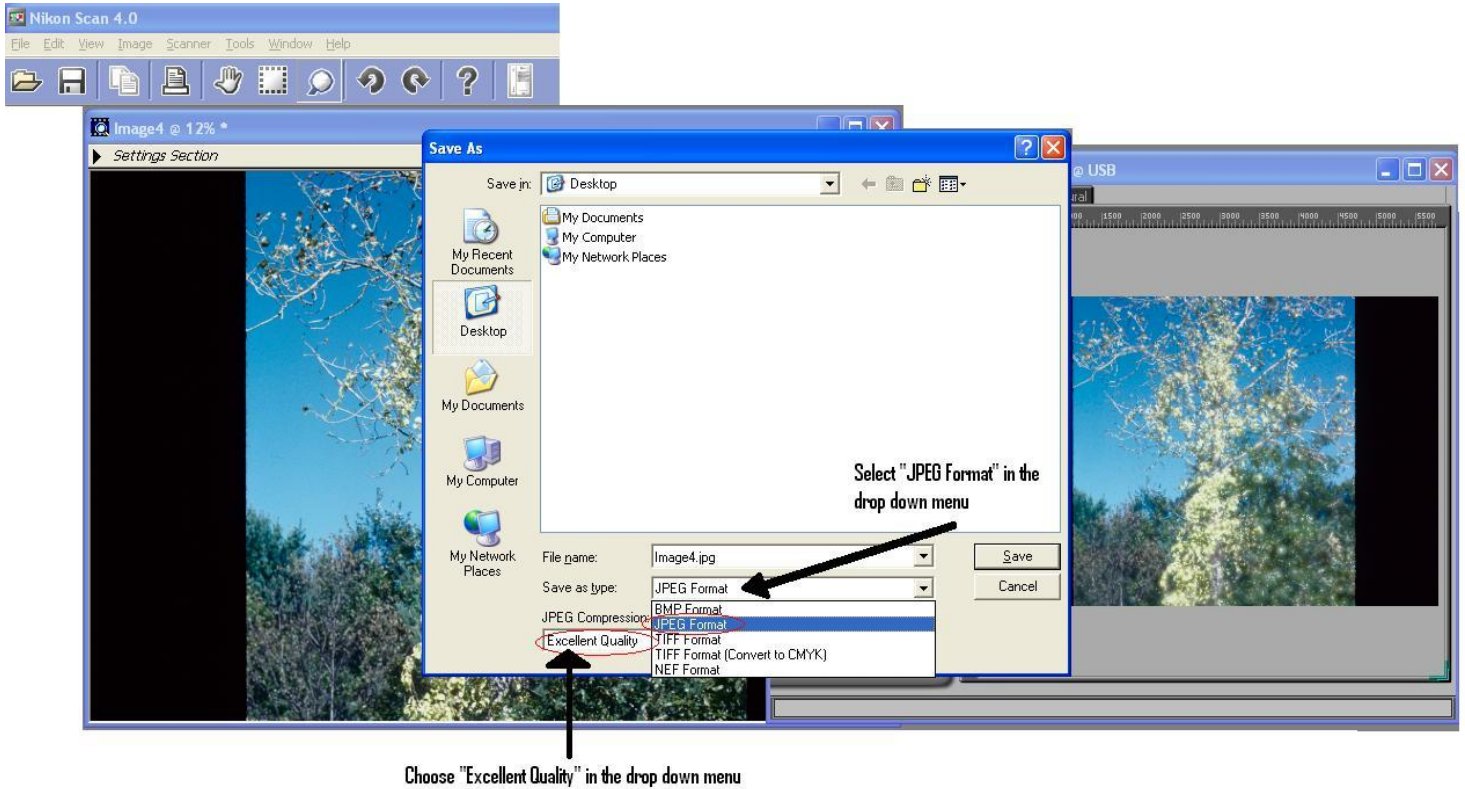
7. If the image is not displayed properly, eject the slide and turn it to correct the orientation, then select Preview again.
8. Once the image displays properly (see below) select Scan.



9. Scanning may take a few minutes to complete.
10. Once the image displays properly in the background, save the image.
11. Click File, then Save As



12. Change the “Save as type” to “JPEG Format” and change the quality to “Excellent Quality”



13. Save to a file on the desktop.

14. Close the scanned image, and repeat steps 4 – 13 for all slides.