

GPS GARP 0210-501-11046 Cultural Geography Online CGCE Summer Session II 2020

M 070620 - F 081420

GPS Geography Planning and Sustainability (formerly GARP)

- Three (3) credit hours. Common Core: Global Diversity (GDIV)

INSTRUCTOR: Sean M. Fitzgerald MS PhD ABD; GPS Senior Adjunct Faculty.

E-MAIL: sfitzgerald@westfield.ma.edu

Online **OFFICE HOURS:** PLATO Online Office by Appointment. Text or Email anytime.

- Best Practice: Voice | Text at 413-626-3713 24/7

Cultural Geography is an interdisciplinary, systematic-thematic, and **geographic survey** of world culture (around the world in around two weeks); enhancing our understanding and appreciation of the human mosaic that is our global cultural diversity. The three cultural themes include population, social systems, and economies, and we explore the geographic distribution patterns and relationships of and between the three themes. Our objective is to enhance our cultural and geographic literacy, and question our understandings of why culture is where it is; with a focus on characteristics which give unique identity to our diverse cultural landscapes. In application, cultural and geographic intelligence, supported with the latest online information technologies can enhance academic and professional activities and is one aspect of participation in the developing global community.

See also <https://en.unesco.org/>

The Announcements page on PLATO suggests a model time-management framework for shorter summer courses that has worked for most students over the years. This is a venue which suggests attention of several hours per-week. In brief, there are Three Theme Assignments (which use the same format and the same student selected Research Country as a focus-examples). You would do one Theme Assignment each one-two weeks or so. There is a Final (Research Country) Cultural and Geographic Profile Report, based upon the content of the Theme assignment definitions and essays; and using the same Research Country, which you would draft while you do each related Theme Assignment, and finish-up the last week. You **MUST READ** and use the textbook chapters. It is strongly suggested you browse and use as appropriate the supporting Chapter-Topic Reviews and Notes, Videos, and Documents and links on PLATO. Nearly every student using this guided-initiative approach has successfully completed the course. All 'Late' work (due-dates are suggested) in this summer session are due by **M 081720**.

- Live Blackboard Ultra Virtual Office-Classroom (and case-studies) hours will be during evening hours W around 6-7 PM EST or as needed-see Announcements (Optional). Most all essential course instructional videos are pre-recorded. Students are encouraged to use the Discussions

Forum if any live sessions are not compatible with your schedule; Virtual-Live Office is optional as student schedules may vary.

Textbook: Rubenstein, J.M., 2019. Contemporary Human Geography. 4th ed. Prentice Hall.

- Purchase-Rent at WSU BOOKSTORE
- RENTALS See also WSU BOOKSTORE DIGITAL CONTENT
- Rentals and Online Versions, and USED are best practice and cost-effective.
- Purchase-Rent text or digital text at Pearson: Rubenstein Contemporary Human Geography 4th Edition
- Purchase-Rent paper new-**used** or digital cost-effective at a rated online vendor.
- **The textbook must be the 4th EDITION.** Most all course support and assignment materials on PLATO reflect the 4th edition of the textbook. The Textbook and materials on PLATO provide all the information you need to complete course assignments successfully.

Format:

- Online course progresses through the three Theme Assignments; using the textbook Chapters (4-Chapters per Theme) and related Theme Items, PLATO Chapter folders and supporting materials, and ends with a Final Report. Initiative is prudent.
- The Textbook is the Primary Source for Assignments; thorough reading is required. It is required that textbook-theme vocabulary-concepts be used-applied to Steps 2-4 responses.
- All Theme Assignments follow the same format (Steps 1-4; Multiple-Choice, Definition Short Answers, Textbook Short Answers, and Theme Essay). Chapter video tutorials may cover chapter material and occasionally related current-events; view on your own schedule or as needed.
- A weekly Discussion Forum/Thread is maintained, encouraging comment, and a Live Office-Classroom with Audio and Graphical interface is used optionally as noted in Announcements.
- A Standardized Power Point Theme Assignment SUBMISSION TEMPLATE is provided for consistent assignment formatting; which can also be modified by students as needed.

Grade Rubric:

400 total points in three Theme Assignments and a 5-7 page final report derived directly from Theme Assignment Step 2 and 4 materials. (Pages Not including Maps, Tables, and Graphics)

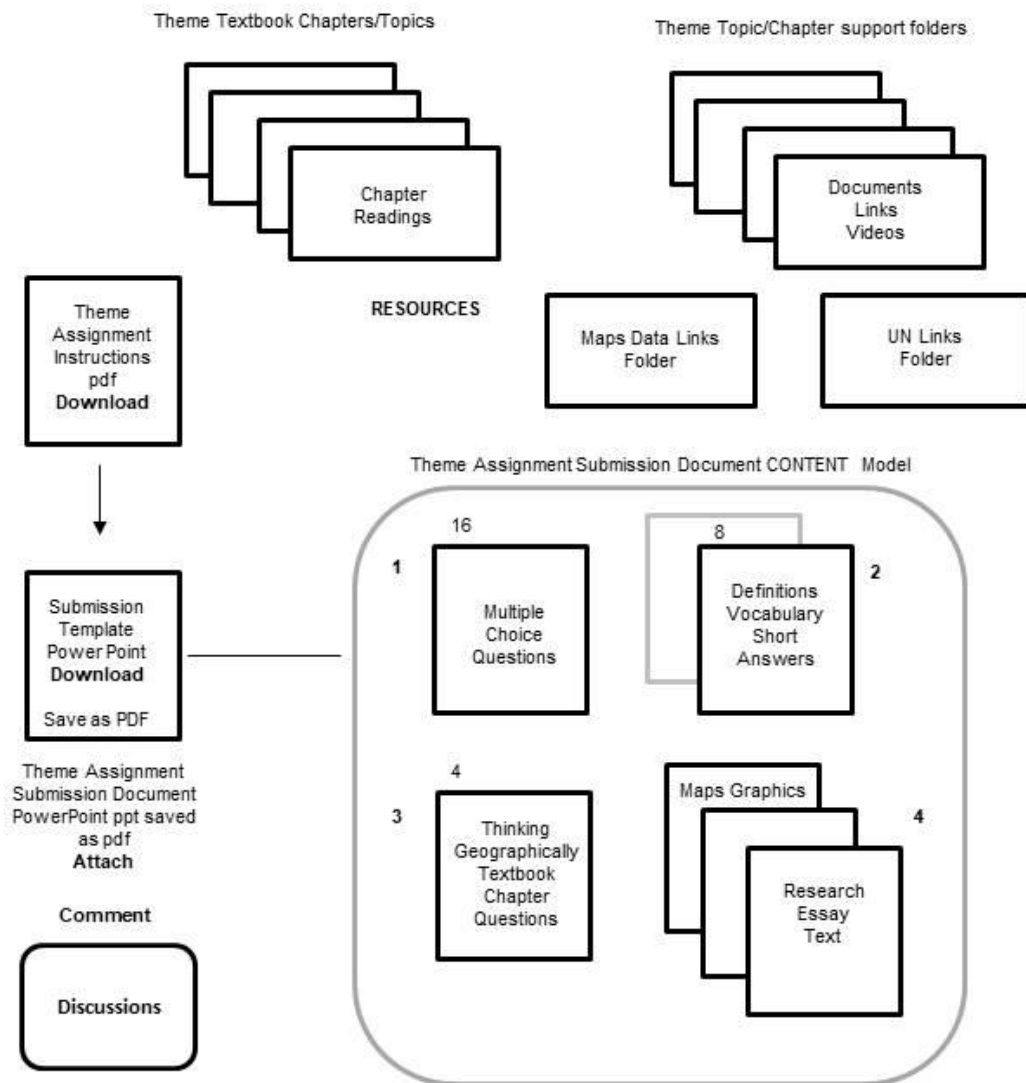
- A = 360+ points
- B = 309-359 points
- C = 268- 308 points
- D = 227-267 points

Plus and Minus Letter Grades are calculated at the end of the session. Factors include reasonably on-time assignments, Discussion Forum-Thread Comments, exceptionally researched Theme Assignments, and tracked video viewing. Pre-recorded Course Videos are 15-minutes each (in several parts).

Opening Day Ask Questions	M 7/6	Have your Book Explore Plato
Theme 1 Population Geography		Map and Descriptive Data
Chapter 1	W 7/8	Theme 1 is 100-Points
Intro to Geography		Select a Research Country
Chapter 2		(From List; use U.S. only as comparison)
Population Geography		Geo-Demographics
Chapter 3		
Geography of Migration		Connects to Chapter 4 and Theme 2
Chapter 4	F 7/17	
Geography of Folk & Popular Cultures		Connects to Theme 2
Theme 2 Social Geography <i>Start your Final Report Now</i>		Theme 2 is 100-Points Theme 1 Assignment Suggested DUE M 7/20
Chapter 5	M 7/20	Connects to Chapter 7
Geography of Language		Use Weekend Productively
Chapter 6		

Geography of Belief Systems		Connects to Chapter 4
Chapter 7		Last W Date
Ancestral and Ethnic Geography		Associates with Chapter 2-4, and 5
Chapter 8	M 7/27	
Political Geography		Systems Spatial Organization Geopolitics Regional Organizations
Theme 3 Economic Geography		Theme 3 is 100-Points Theme 2 Assignment suggested DUE W 8/5
Chapter 9	F 7/31	
Agricultural Geography		Connects to Chapter 10
Chapter 10		
Geography of Sustainable Development		Inc. Geography of Settlements
Chapter 11		
Industrial Geography		
Chapter 12	W 8/12	
Geography of Economic Services		
Final Report Guidance	F 8/14	Theme 3 Assignment DUE
<i>See Final Report Guidelines</i>	8/17	Final Report 100-Points DUE All-Work

THEME ASSIGNMENT MODEL



Theme Assignments each and all have FOUR (4) Steps
 Theme Assignments each and all cover FOUR (4) Chapters

OBJECTIVE: Complete THREE Theme Assignments and Final Report.

A Best Practice protocol for Theme Assignments would be:

- View the Theme Assignment Procedural Video, and any other short Videos for the Theme or Topics.
- Download and Examine the Theme Assignment Instructions PDF. ALL Theme Assignments have the same 4-Step format. Download Submission Template Power Point Document for your answers-responses. All Step responses go in the same Power Point Document. Save completed template as PDF and attach-submit.
- Read the Textbook Chapters and examine the Chapter Review and Chapter notes in the Chapter folder as needed. Take note of any additional resources provided.

Read chapters lightly at first, and note additional resources. Use Index and Glossary as needed. Next read in-depth the specific chapter sections relevant to the questions. Use resources provided in support optionally as you feel appropriate.

Complete the Theme Assignment Step 1 Multiple-Choice Questions (16) and Step 2 Definitions-Vocabulary Short-Answer Questions (8) and Thinking Geographically Questions (4); enter the answers in your Theme Assignment PowerPoint Submission Template Text Box per example. The questions in the Theme Assignment follow the Chapter sequence. Multiple-choice, Definitions-Vocabulary, and Thinking Geographically use the textbook, and the latter two steps may also use supporting materials provided in PLATO Theme and Chapter folders. Step 2 Definition-Vocabulary short-answers are typically 1-2 short paragraphs and sometimes a graphic, a map, or a data point. Finally, complete the short research essay.

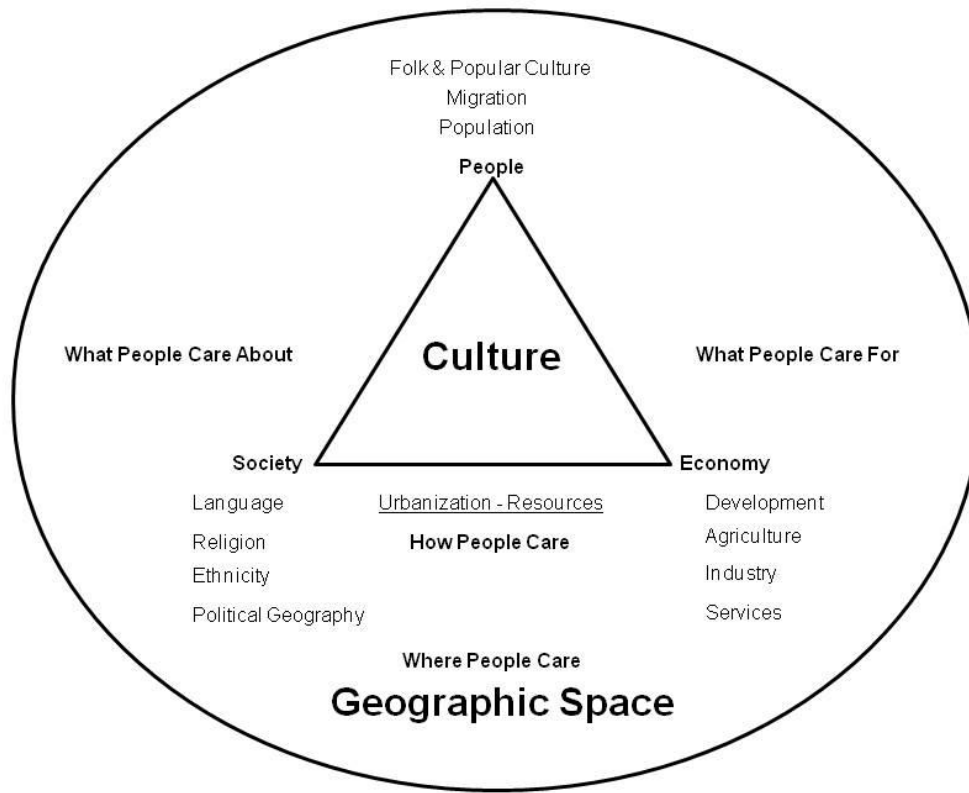
SOP: Text Depth, Maps, Tables, Graphics, Photos, Citations. Professional Formatting.

A Best Practice protocol for the Final Report would be:

- View the Final Report Procedural Video.
- Download and Examine the Instructions PDF and Submission Template EXAMPLE
- COMBINE CONTENT of Step 2 and 4 of Theme Assignments 1-3. Add Connecting TEXT and a final Conclusion.

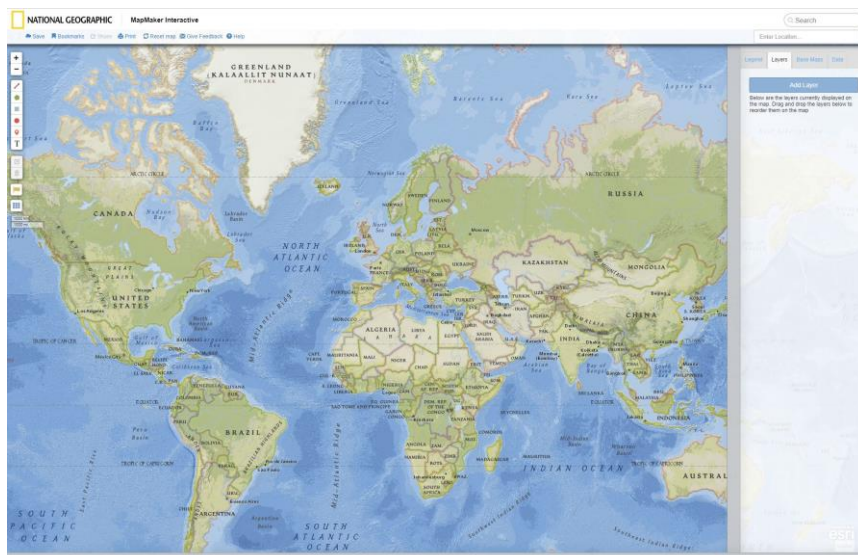
Cultural Geography Topics Model

3



Several Web Map Tools:

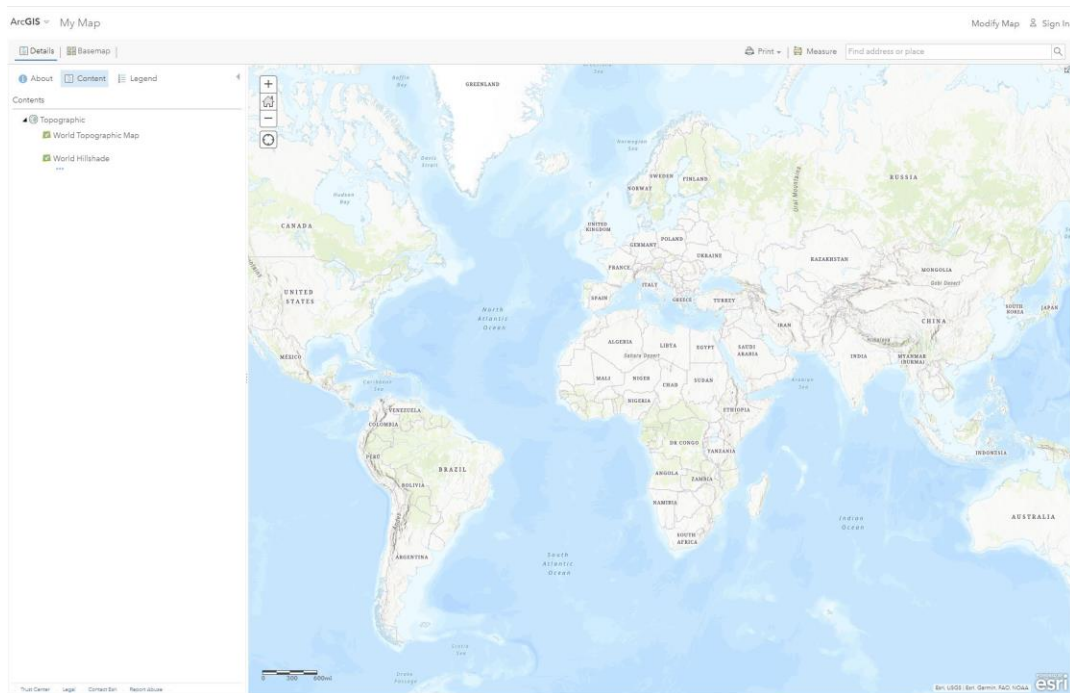
<http://mapmaker.nationalgeographic.org/> Thematic World Atlas



<https://www.google.com/earth/> Global Imagery and Maps

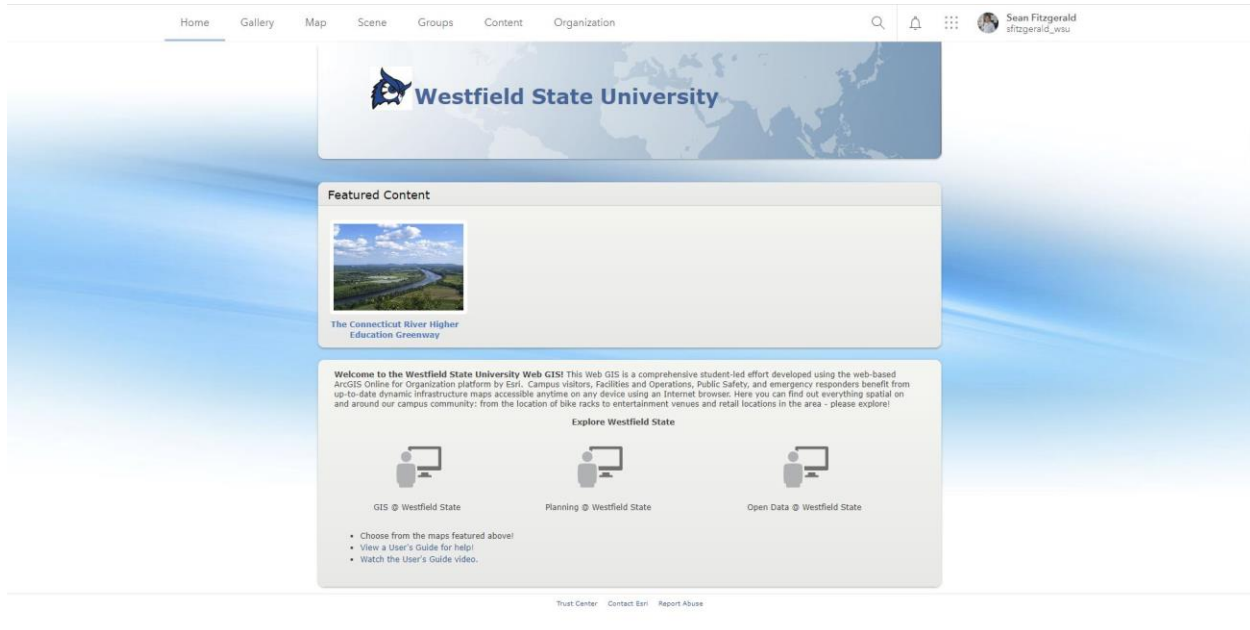


<https://www.arcgis.com/home/webmap/viewer.html> Public Map Viewer



- All Students are provided with UN/PW for access to our WSU GPS Department Organizational ESRI ArcGIS Online Web Application. There is a Group dedicated to our course. Instructor will provide guidance for accessing Gallery and Group Maps for use in Theme Assignments.

WSU GPS ArcGIS Online Home Page:



OVERVIEW: COURSE TOOLS / APPLICATIONS MODEL

HOME PAGE

BLACKBOARD PLATO

Opens w/

ANNOUNCEMENTS

Course Tools
List View



START HERE



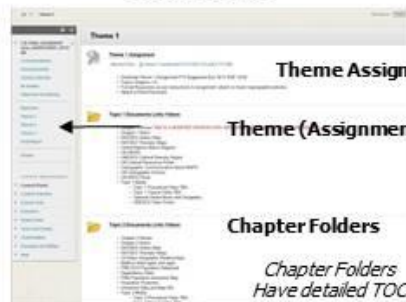
- Get Connected to Live Office (Test Run first)

• View the 15-min Start Video

Opens in your Web Browser

- ALL THEME ASSIGNMENTS COVER 4 CHAPTERS

Theme 1 Item



Theme Assignment Download Instructions and Template

Theme (Assignment) Items

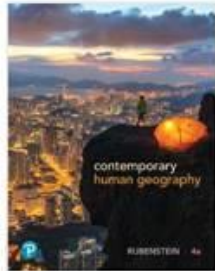
Chapter Folders

*Chapter Folders
Have detailed TOC*

A Step-by-Step Guide:

Step 1

- **BUY THE TEXTBOOK**



Contemporary Human Geography, 4th Edition, 4/E WSU Bookstore or eText

List View

HOME PAGE



Folder View



Folder View in Window

Step 2

- **Examine START HERE Item**
- **Watch the Tutorial Video (15-minutes)**



BBC Ultra LIVE OFFICE Item Cultural Geography Live Office



Step 3

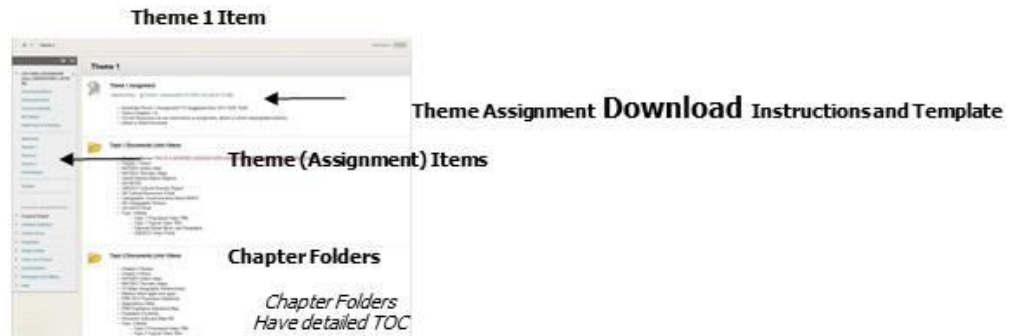
- **Cultural Geography Live Office**
- **Examine DISCUSSIONS**
- **Examine Communications**

See Announcements for Schedule

OPTIONAL

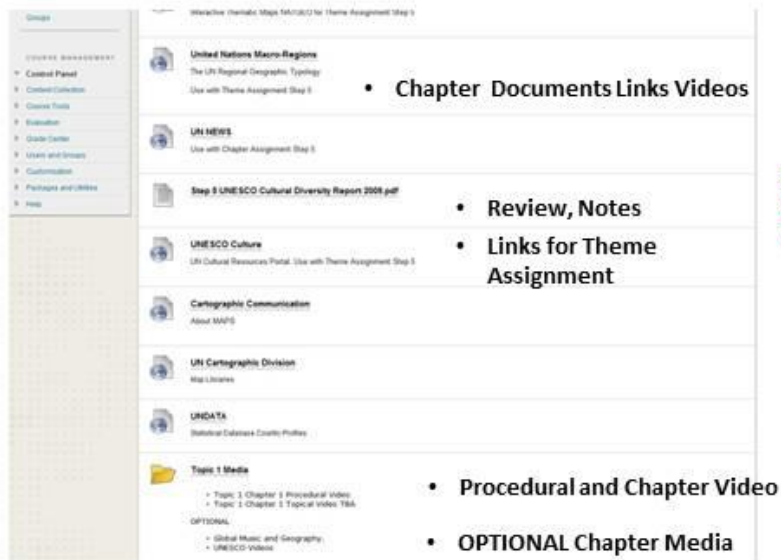
STEP 4 DOWNLOAD THEME ASSIGNMENT PDF and Power Point

- **ALL THEME ASSIGNMENTS COVER 4 CHAPTERS**



STEP 5 GO TO AND EXAMINE Theme Chapter FOLDER.

ALL Chapter FOLDERS HAVE THE SAME FORMAT



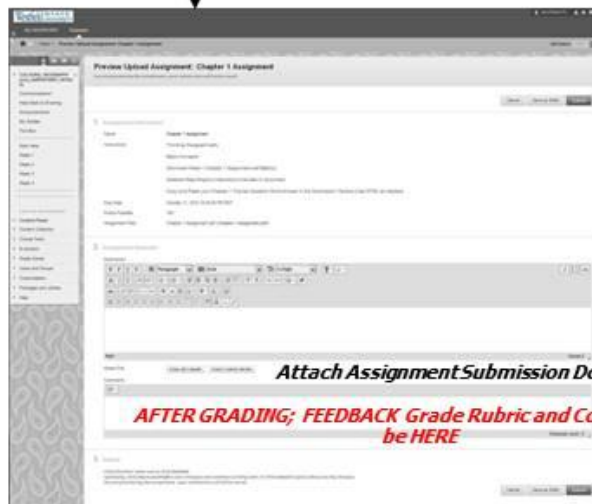
USE The FOUR CHAPTER FOLDERS in each THEME to SUPPORT the THEME ASSIGNMENT

Summer II SESSION 2020 Chapter FOLDERS Have Simplified Format

STEP 6 COMPLETE AND SUBMIT ASSIGNMENT AT Theme Item > Theme ASSIGNMENT LINK



GO TO AssignmentItem Link in Bold Text TO SUBMIT ASSIGNMENT



You have Three attempts, or then just attach to WSU email.

Save Power Point as PDF

Attach Assignment Submission Document HERE

AFTER GRADING; FEEDBACK Grade Rubric and Comments will be HERE